

KENSINGTON FIELDS

Harrogate





KENSINGTON FIELDS

Harrogate



COUNTRYSIDE
Homes

KENSINGTON FIELDS

Harrogate

- V Visitor spaces
- BS Shared bin store
- CS Shared cycle store
- SS Electricity sub station
- B/BCP Bin collection points
- POS Public open space



This plan has been produced for home identification purposes only and is not to scale.
The development layout, landscaping and tenure of all dwellings may be subject to change throughout the course of the development. Finishes and materials may vary from those shown on the plan. Please check the details of your chosen plot and house type with the sales consultant. Development layout plan correct at time of production.

Vistry North Central Midlands region
Dunston Hall, Dunston, Stafford, Staffordshire ST18 9AB. Telephone: 01785 788 300

Produced by the Vistry Group Design Studio.

When you have finished with this leaflet please recycle it.

DS15158 / 12.25



COUNTRYSIDE
Homes



- PV solar panels
- Waste water heat recovery

THE NIGHTINGALE

3 bedroom home



COUNTRYSIDE
Homes

countrysidehomes.com

THE NIGHTINGALE

3 bedroom home



GROUND FLOOR	metres	feet / inches
Kitchen/Dining room	5.19 x 3.16	17' 0" x 10' 4"
Sitting room	3.61 x 3.16	11' 10" x 10' 4"

FIRST FLOOR

Bedroom 1	6.01 x 3.28	19' 8" x 10' 9"
Bedroom 2	4.21 x 2.98	13' 9" x 9' 9"
Bedroom 3	4.18 x 2.98	13' 8" x 9' 9"
Study	2.38 x 2.15	7' 9" x 7' 0"

ovn	oven	ffzs	fridge freezer space
h	hob	cup'd	cupboard
ds	dishwasher space	◀ ▶	measuring points
ws	washing machine space		

The Nightingale | Yew Tree Lane |

The floorplan has been produced for illustrative purposes only. Room sizes shown are between arrow points as indicated on plan. The dimensions have tolerances of + or -50mm and should not be used other than for general guidance. If specific dimensions are required, enquiries should be made to the sales consultant. The floor plans shown are not to scale. Measurements are based on the original drawings. Slight variations may occur during construction.

The illustrations shown are computer generated impressions of how the property may look and are indicative only. External details or finishes may vary on individual plots and homes may be built in either detached or attached styles depending on the development layout. Exact specifications, window styles and whether a property is left or right-handed may differ from plot to plot. Please speak to our sales consultant for specific plot details.

Produced by the Vistry Group Design Studio.
When you have finished with this leaflet, please recycle it.
DS13419 / 05.25

FIRST FLOOR



GROUND FLOOR



COUNTRYSIDE
Homes



- Low energy lighting and ventilation systems
- Electric vehicle charging point
- PV solar panels
- Waste water heat recovery

THE DARLAND

2 bedroom home



COUNTRYSIDE
Homes

THE DARLAND

2 bedroom home



GROUND FLOOR	metres	feet / inches
Sitting/Dining room	4.32 x 3.52	14' 1" x 11' 5"
Kitchen	3.47 x 2.25	11' 3" x 7' 4"

FIRST FLOOR	metres	feet / inches
Bedroom 1	4.37 x 3.18	14' 4" x 10' 5"
Bedroom 2	4.37 x 2.75	14' 4" x 9' 0"

ovn	oven	ffzs	fridge freezer space
h	hob	cup'd	cupboard
ds	dishwasher space	◀ ▶	measuring points
ws	washing machine space		

The Darland | Yew Tree Lane |

The floorplan has been produced for illustrative purposes only. Room sizes shown are between arrow points as indicated on plan. The dimensions have tolerances of + or -50mm and should not be used other than for general guidance. If specific dimensions are required, enquiries should be made to the sales consultant. The floor plans shown are not to scale. Measurements are based on the original drawings. Slight variations may occur during construction.

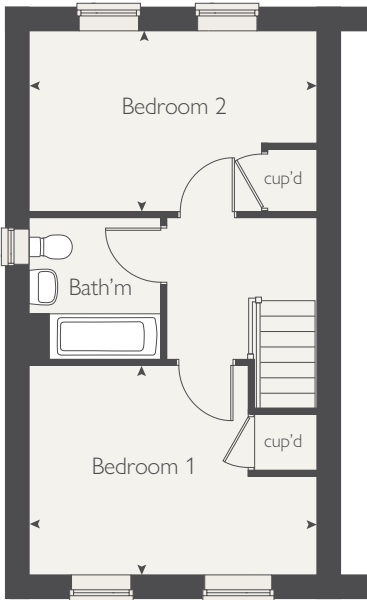
The illustrations shown are computer generated impressions of how the property may look and are indicative only. External details or finishes may vary on individual plots and homes may be built in either detached or attached styles depending on the development layout. Exact specifications, window styles and whether a property is left or right-handed may differ from plot to plot. Please speak to our sales consultant for specific plot details.

Produced by the Vistry Group Design Studio.

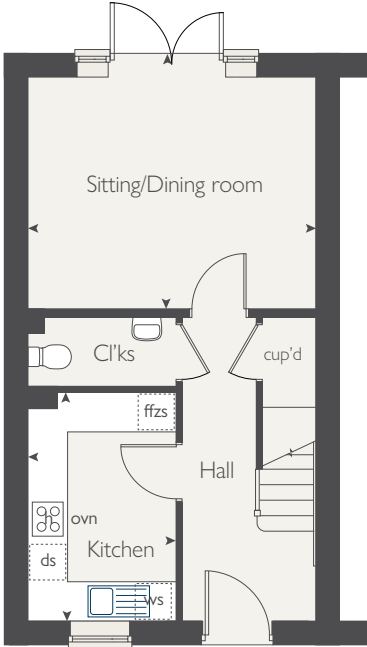
When you have finished with this leaflet, please recycle it.

DS13419 / 05.25

FIRST FLOOR



GROUND FLOOR



COUNTRYSIDE
Homes



- Low energy lighting and ventilation systems
- Electric vehicle charging point
- PV solar panels
- Waste water heat recovery

THE EGRET

3 bedroom home



THE EGRET

3 bedroom home



GROUND FLOOR	metres	feet / inches
Kitchen/Dining room	5.05 x 3.62	16' 6" x 11' 10"
Sitting room	3.95 x 3.00	12' 11" x 9' 10"

FIRST FLOOR

Bedroom 1	4.54 x 2.80	14' 10" x 9' 2"
Bedroom 2	4.64 x 2.80	15' 2" x 9' 2"
Bedroom 3	3.50 x 2.15	11' 5" x 7' 0"

ovn	oven	ffzs	fridge freezer space
h	hob	cup'd	cupboard
ds	dishwasher space	◀ ▶	measuring points
ws	washing machine space		

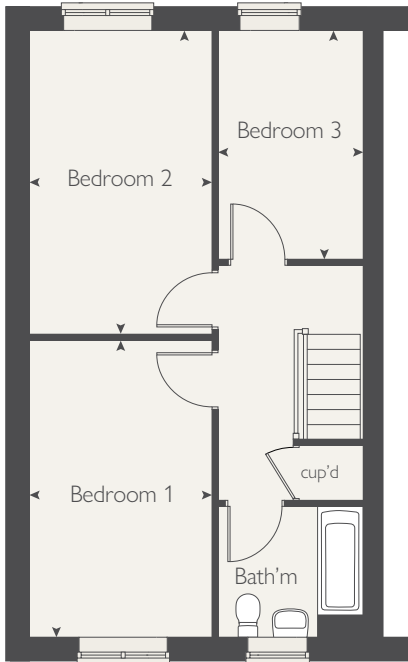
The Egret | Yew Tree Lane |

The floorplan has been produced for illustrative purposes only. Room sizes shown are between arrow points as indicated on plan. The dimensions have tolerances of + or -50mm and should not be used other than for general guidance. If specific dimensions are required, enquiries should be made to the sales consultant. The floor plans shown are not to scale. Measurements are based on the original drawings. Slight variations may occur during construction.

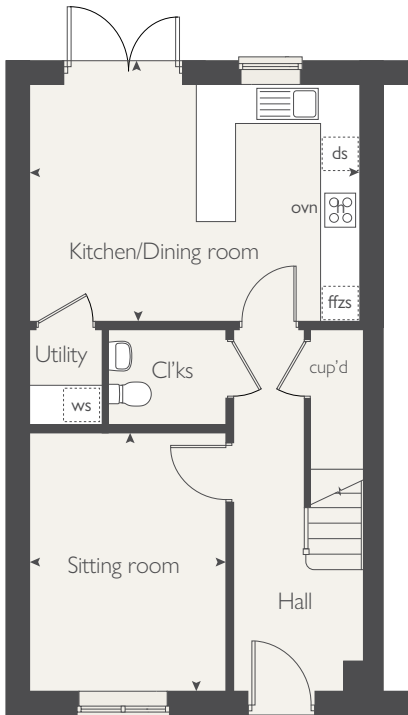
The illustrations shown are computer generated impressions of how the property may look and are indicative only. External details or finishes may vary on individual plots and homes may be built in either detached or attached styles depending on the development layout. Exact specifications, window styles and whether a property is left or right-handed may differ from plot to plot. Please speak to our sales consultant for specific plot details.

Produced by the Vistry Group Design Studio.
 When you have finished with this leaflet, please recycle it.
 DS13419 / 05.25

FIRST FLOOR



GROUND FLOOR



COUNTRYSIDE
Homes



- Low energy lighting and ventilation systems
- Electric vehicle charging point
- PV solar panels
- Waste water heat recovery

THE JACKDAW

3 bedroom home



COUNTRYSIDE
Homes

THE JACKDAW

3 bedroom home



GROUND FLOOR	metres	feet / inches
Kitchen/Dining room	4.99 x 3.82	16' 4" x 12' 6"
Sitting room	3.56 x 2.92	11' 8" x 9' 6"

FIRST FLOOR

Bedroom 1	3.46 x 2.75	11' 4" x 9' 0"
Bedroom 2	3.15 x 2.75	10' 4" x 9' 0"
Bedroom 3	3.25 x 2.15	10' 7" x 7' 0"

ovn	oven	ffzs	fridge freezer space
h	hob	cup'd	cupboard
ds	dishwasher space	◄ ►	measuring points
ws	washing machine space		

The Jackdaw | Yew Tree Lane |

The floorplan has been produced for illustrative purposes only. Room sizes shown are between arrow points as indicated on plan. The dimensions have tolerances of + or -50mm and should not be used other than for general guidance. If specific dimensions are required, enquiries should be made to the sales consultant. The floor plans shown are not to scale. Measurements are based on the original drawings. Slight variations may occur during construction.

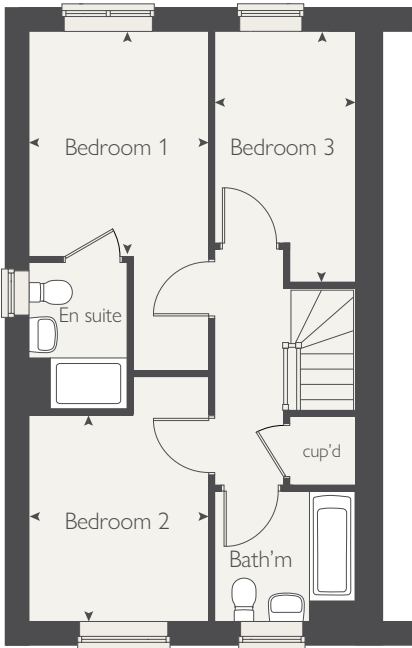
The illustrations shown are computer generated impressions of how the property may look and are indicative only. External details or finishes may vary on individual plots and homes may be built in either detached or attached styles depending on the development layout. Exact specifications, window styles and whether a property is left or right-handed may differ from plot to plot. Please speak to our sales consultant for specific plot details.

Produced by the Vistry Group Design Studio.

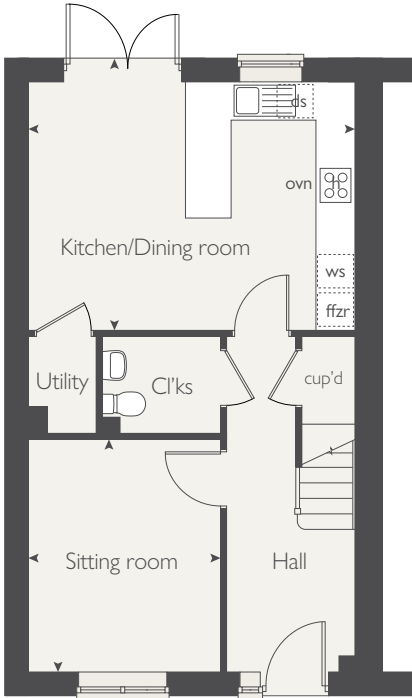
When you have finished with this leaflet, please recycle it.

DS13419 / 05.25

FIRST FLOOR



GROUND FLOOR



COUNTRYSIDE
Homes



- Low energy lighting and ventilation systems
- Electric vehicle charging point
- PV solar panels
- Waste water heat recovery

THE KINGFISHER

3 bedroom home



COUNTRYSIDE
Homes

THE KINGFISHER

3 bedroom home



GROUND FLOOR	metres	feet / inches
Kitchen/Dining room	5.68 x 3.37	18' 7" x 11' 0"
Sitting room	5.68 x 3.10	18' 7" x 10' 2"

FIRST FLOOR

Bedroom 1	4.62 x 3.40	15' 1" x 11' 1"
Bedroom 2	3.42 x 3.36	11' 2" x 11' 0"
Bedroom 3	3.42 x 2.22	11' 2" x 7' 3"

ovn	oven	ffzs	fridge freezer space
h	hob	cup'd	cupboard
ds	dishwasher space	◀ ▶	measuring points
ws	washing machine space		

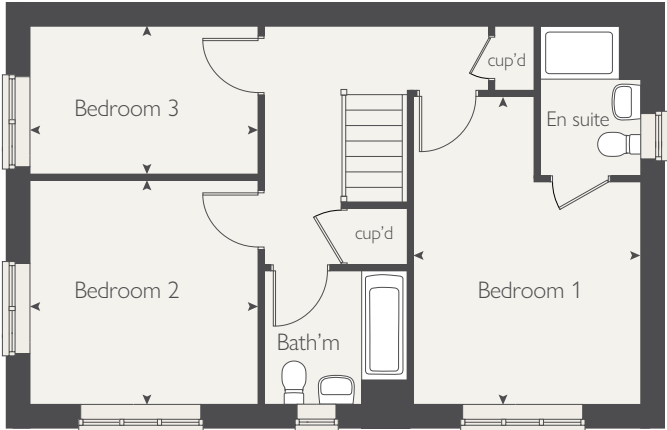
The Kingfisher | Yew Tree Lane |

The floorplan has been produced for illustrative purposes only. Room sizes shown are between arrow points as indicated on plan. The dimensions have tolerances of + or -50mm and should not be used other than for general guidance. If specific dimensions are required, enquiries should be made to the sales consultant. The floor plans shown are not to scale. Measurements are based on the original drawings. Slight variations may occur during construction.

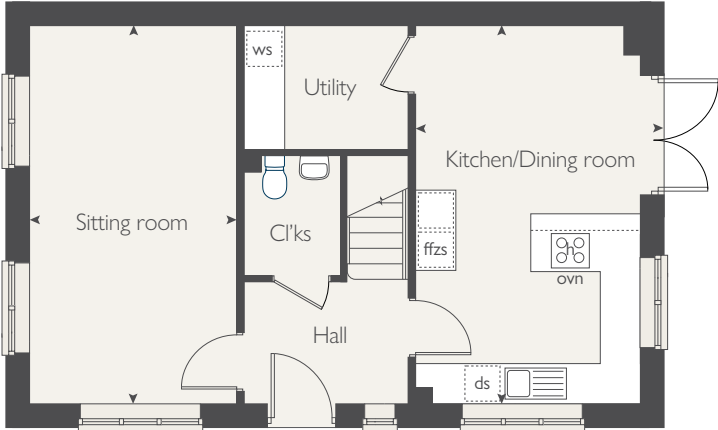
The illustrations shown are computer generated impressions of how the property may look and are indicative only. External details or finishes may vary on individual plots and homes may be built in either detached or attached styles depending on the development layout. Exact specifications, window styles and whether a property is left or right-handed may differ from plot to plot. Please speak to our sales consultant for specific plot details.

Produced by the Vistry Group Design Studio.
When you have finished with this leaflet, please recycle it.
DS13419 / 05.25

FIRST FLOOR



GROUND FLOOR



COUNTRYSIDE
Homes



- PV solar panels
- Waste water heat recovery

THE STARLING

4 bedroom home

countrysidehomes.com



COUNTRYSIDE
Homes

THE STARLING

4 bedroom home



GROUND FLOOR	metres	feet / inches
Kitchen/Dining room	5.67 x 4.25	18' 7" x 13' 11"
Sitting room	4.34 x 3.43	14' 2" x 11' 3"

FIRST FLOOR

Bedroom 1	4.29 x 3.43	14' 0" x 11' 3"
Bedroom 2	4.44 x 3.17	14' 6" x 10' 4"
Bedroom 3	3.73 x 3.17	12' 2" x 10' 4"
Bedroom 4	3.43 x 3.13	11' 3" x 10' 3"

ovn	oven	ffzs	fridge freezer space
h	hob	cup'd	cupboard
ds	dishwasher space	cyl	cylinder
ws	washing machine space	◀ ▶	measuring points

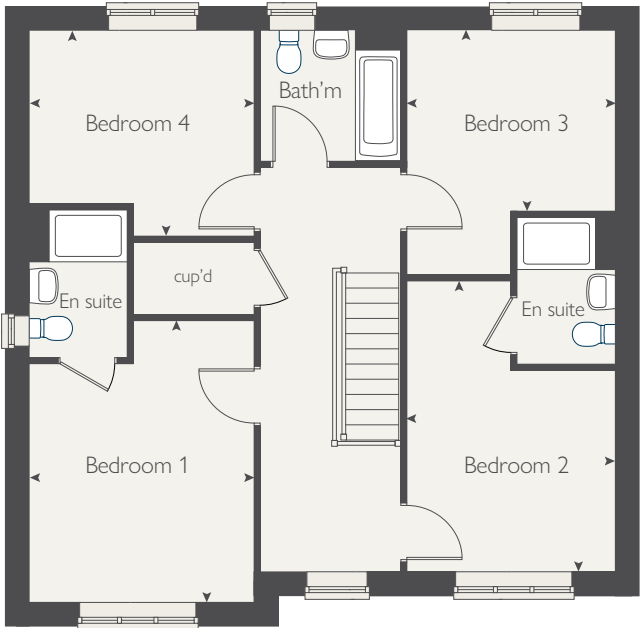
The Starling | Yew Tree Lane |

The floorplan has been produced for illustrative purposes only. Room sizes shown are between arrow points as indicated on plan. The dimensions have tolerances of + or -50mm and should not be used other than for general guidance. If specific dimensions are required, enquiries should be made to the sales consultant. The floor plans shown are not to scale. Measurements are based on the original drawings. Slight variations may occur during construction.

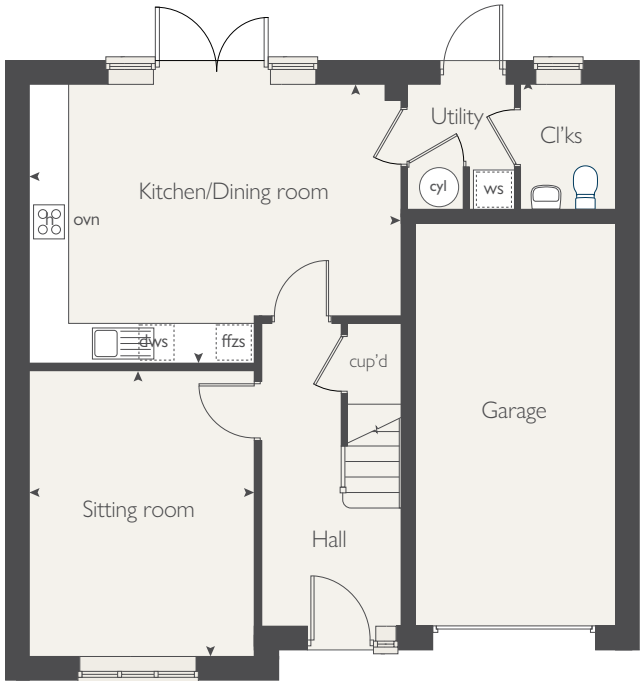
The illustrations shown are computer generated impressions of how the property may look and are indicative only. External details or finishes may vary on individual plots and homes may be built in either detached or attached styles depending on the development layout. Exact specifications, window styles and whether a property is left or right-handed may differ from plot to plot. Please speak to our sales consultant for specific plot details.

Produced by the Vistry Group Design Studio.
When you have finished with this leaflet, please recycle it.
DS13419 / 05.25

FIRST FLOOR



GROUND FLOOR



COUNTRYSIDE
Homes



- Spacious living room with bay window
- Low energy lighting and ventilation systems
- Electric vehicle charging point
- PV solar panels
- Waste water heat recovery

THE BECKWITH

4 bedroom home



COUNTRYSIDE
Homes

THE BECKWITH

4 bedroom home



GROUND FLOOR	metres	feet / inches
Kitchen/Family room	8.60 x 3.25	28' 2" x 10' 7"
Sitting room	4.89 x 3.76	16' 0" x 10' 4"
Study	3.30 x 2.02	10' 9" x 6' 7"

FIRST FLOOR

Bedroom 1	4.25 x 3.09	13' 11" x 10' 0"
Bedroom 2	3.98 x 3.14	13' 0" x 10' 3"
Bedroom 3	3.40 x 3.14	11' 1" x 10' 3"
Bedroom 4	3.12 x 2.50	10' 2" x 8' 2"

ovn	oven	ffzs	fridge freezer space
h	hob	cup'd	cupboard
ds	dishwasher space	cyl	cylinder
ws	washing machine space	◀ ▶	measuring points

The Beckwith | Yew Tree Lane |

The floorplan has been produced for illustrative purposes only. Room sizes shown are between arrow points as indicated on plan. The dimensions have tolerances of + or -50mm and should not be used other than for general guidance. If specific dimensions are required, enquiries should be made to the sales consultant. The floor plans shown are not to scale. Measurements are based on the original drawings. Slight variations may occur during construction.

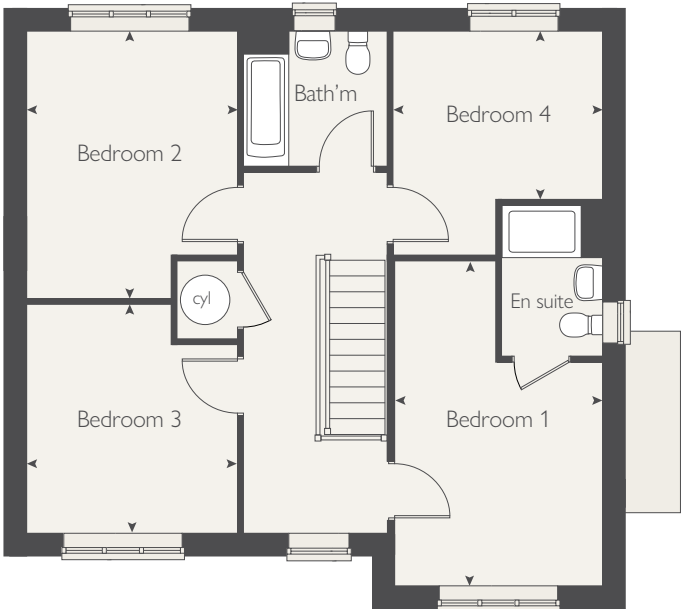
The illustrations shown are computer generated impressions of how the property may look and are indicative only. External details or finishes may vary on individual plots and homes may be built in either detached or attached styles depending on the development layout. Exact specifications, window styles and whether a property is left or right-handed may differ from plot to plot. Please speak to our sales consultant for specific plot details.

Produced by the Vistry Group Design Studio.

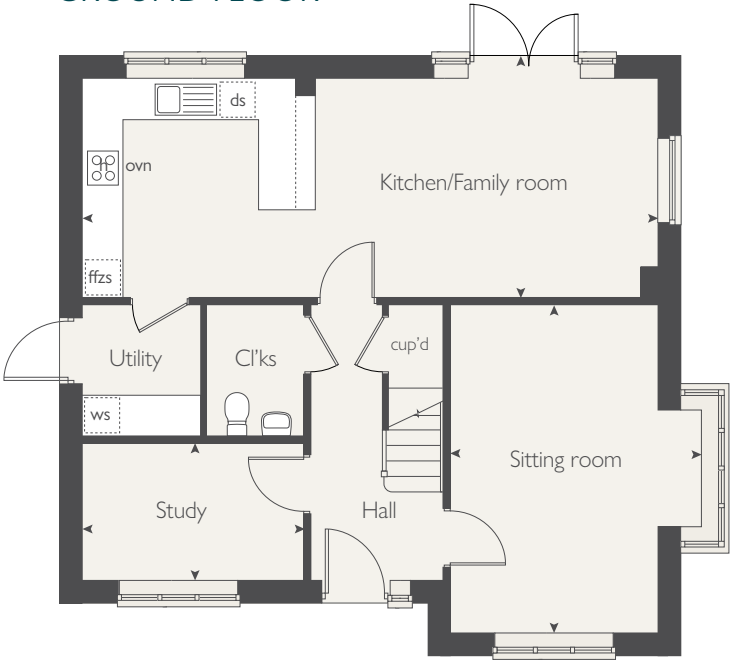
When you have finished with this leaflet, please recycle it.

DS13419 / 05.25

FIRST FLOOR



GROUND FLOOR



COUNTRYSIDE
Homes



- Low energy lighting and ventilation systems
- Electric vehicle charging point
- PV solar panels
- Waste water heat recovery

THE EIDER

4 bedroom home



COUNTRYSIDE
Homes

THE EIDER

4 bedroom home



GROUND FLOOR	metres	feet / inches
Kitchen/Dining room	5.90 x 3.83	19' 4" x 12' 5"
Sitting room	3.75 x 3.62	12' 3" x 11' 8"

FIRST FLOOR

Bedroom 1	3.51 x 3.34	11' 5" x 10' 9"
Bedroom 2	3.51 x 3.32	11' 5" x 10' 8"
Bedroom 3	3.32 x 2.30	11' 5" x 10' 8"
Bedroom 4	4.16 x 2.46	13' 6" x 8' 0"

ovn	oven	ffzs	fridge freezer space
h	hob	cup'd	cupboard
ds	dishwasher space	◀ ▶	measuring points
ws	washing machine space		

The Elder | Yew Tree Lane |

The floorplan has been produced for illustrative purposes only. Room sizes shown are between arrow points as indicated on plan. The dimensions have tolerances of + or -50mm and should not be used other than for general guidance. If specific dimensions are required, enquiries should be made to the sales consultant. The floor plans shown are not to scale. Measurements are based on the original drawings. Slight variations may occur during construction.

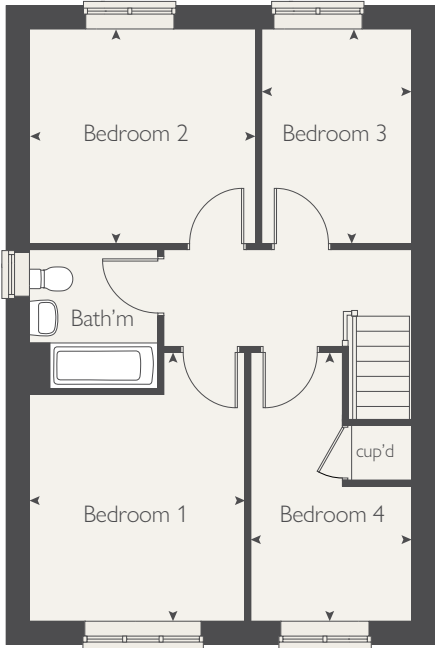
The illustrations shown are computer generated impressions of how the property may look and are indicative only. External details or finishes may vary on individual plots and homes may be built in either detached or attached styles depending on the development layout. Exact specifications, window styles and whether a property is left or right-handed may differ from plot to plot. Please speak to our sales consultant for specific plot details.

Produced by the Vistry Group Design Studio.

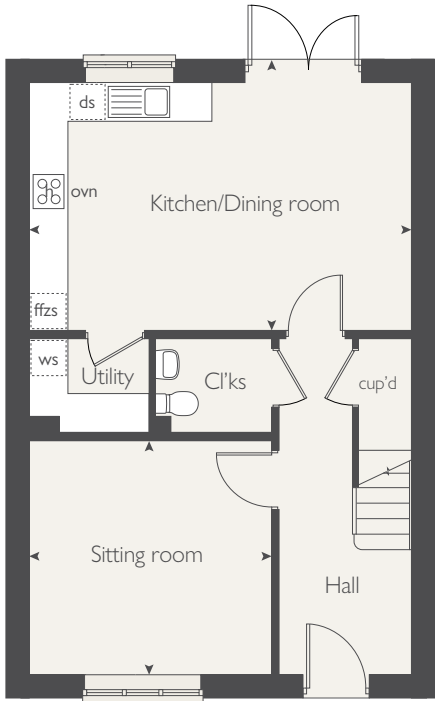
When you have finished with this leaflet, please recycle it.

DS13419 / 05.25

FIRST FLOOR



GROUND FLOOR



COUNTRYSIDE
Homes



- Low energy lighting and ventilation systems
- Electric vehicle charging point
- PV solar panels
- Waste water heat recovery

THE PLOVER

4 bedroom home



THE PLOVER

4 bedroom home



GROUND FLOOR	metres	feet / inches
Kitchen/Dining room	8.60 x 3.25	28' 2" x 10' 7"
Sitting room	4.89 x 3.09	16' 0" x 10' 0"

FIRST FLOOR

Bedroom 1	4.18 x 3.09	13' 8" x 10' 0"
Bedroom 2	3.88 x 3.14	12' 8" x 10' 3"
Bedroom 3	3.40 x 3.14	11' 1" x 10' 3"
Bedroom 4	3.42 x 3.12	11' 2" x 10' 2"

ovn	oven	ffzs	fridge freezer space
h	hob	cup'd	cupboard
ds	dishwasher space	◄ ►	measuring points
ws	washing machine space		

The Plover | Yew Tree Lane |

The floorplan has been produced for illustrative purposes only. Room sizes shown are between arrow points as indicated on plan. The dimensions have tolerances of + or -50mm and should not be used other than for general guidance. If specific dimensions are required, enquiries should be made to the sales consultant. The floor plans shown are not to scale. Measurements are based on the original drawings. Slight variations may occur during construction.

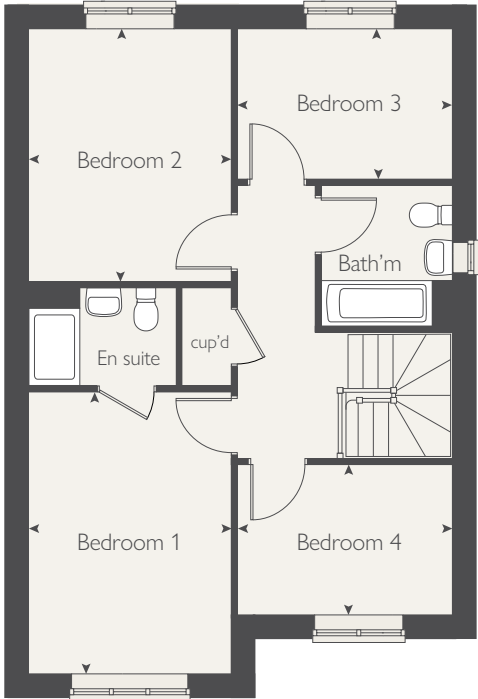
The illustrations shown are computer generated impressions of how the property may look and are indicative only. External details or finishes may vary on individual plots and homes may be built in either detached or attached styles depending on the development layout. Exact specifications, window styles and whether a property is left or right-handed may differ from plot to plot. Please speak to our sales consultant for specific plot details.

Produced by the Vistry Group Design Studio.

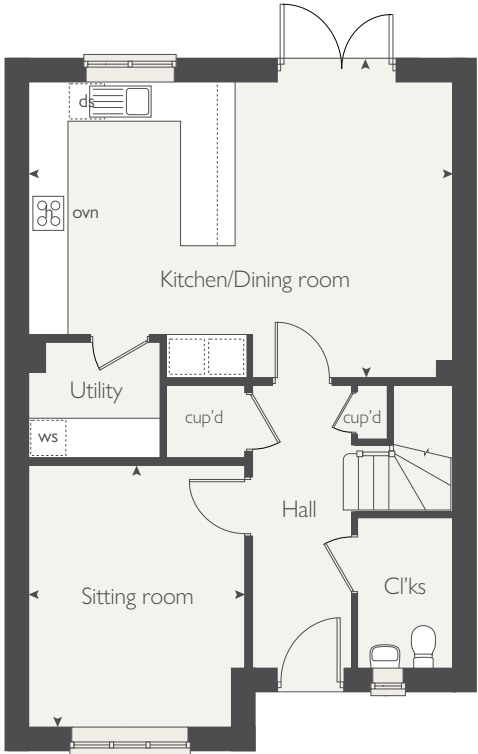
When you have finished with this leaflet, please recycle it.

DS13419 / 05.25

FIRST FLOOR



GROUND FLOOR



COUNTRYSIDE
Homes



- Low energy lighting and ventilation systems
- Electric vehicle charging point
- PV solar panels
- Waste water heat recovery

THE REDSTART

4 bedroom home



THE REDSTART

4 bedroom home



GROUND FLOOR	metres	feet / inches
Kitchen/Dining room	6.46 x 4.13	21' 2" x 13' 6"
Sitting room	6.46 x 3.23	21' 2" x 10' 10"

FIRST FLOOR

Bedroom 1	3.83 x 3.23	12' 7" x 10' 10"
Bedroom 2	3.68 x 2.88	12' 0" x 9' 5"
Bedroom 3	2.85 x 2.69	9' 4" x 8' 9"
Bedroom 4	2.94 x 2.53	9' 7" x 8' 3"

ovn	oven	ffzs	fridge freezer space
h	hob	cup'd	cupboard
ds	dishwasher space	◄ ►	measuring points
ws	washing machine space		

The Redstart | Yew Tree Lane |

The floorplan has been produced for illustrative purposes only. Room sizes shown are between arrow points as indicated on plan. The dimensions have tolerances of + or -50mm and should not be used other than for general guidance. If specific dimensions are required, enquiries should be made to the sales consultant. The floor plans shown are not to scale. Measurements are based on the original drawings. Slight variations may occur during construction.

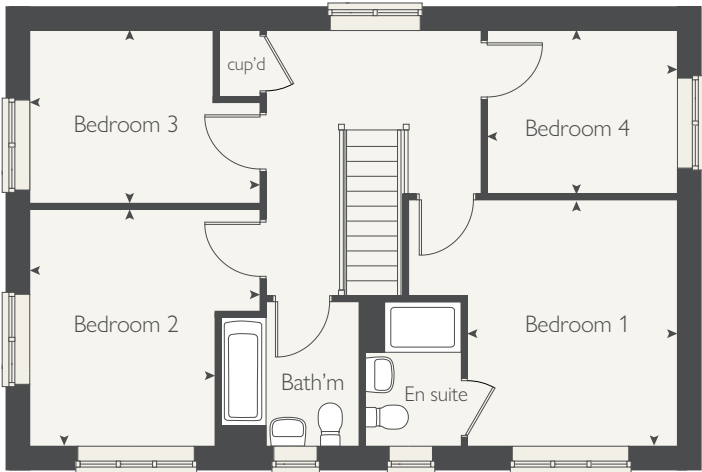
The illustrations shown are computer generated impressions of how the property may look and are indicative only. External details or finishes may vary on individual plots and homes may be built in either detached or attached styles depending on the development layout. Exact specifications, window styles and whether a property is left or right-handed may differ from plot to plot. Please speak to our sales consultant for specific plot details.

Produced by the Vistry Group Design Studio.

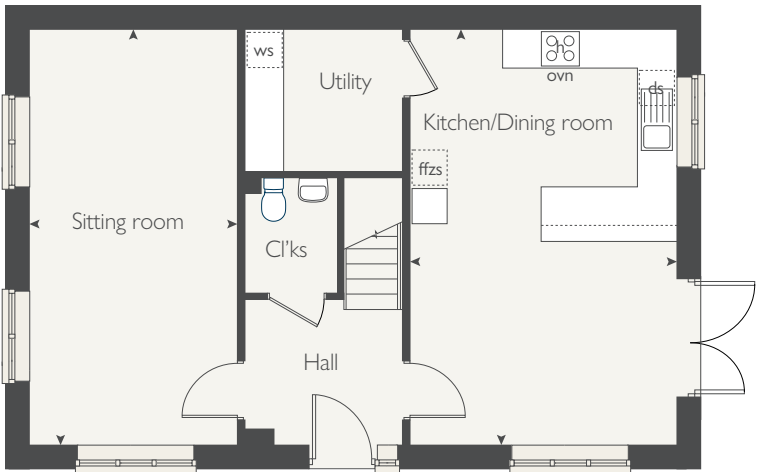
When you have finished with this leaflet, please recycle it.

DS13419 / 05.25

FIRST FLOOR



GROUND FLOOR



COUNTRYSIDE
Homes



- Low energy lighting and ventilation systems
- Electric vehicle charging point
- PV solar panels
- Waste water heat recovery

THE SANDPIPER

4 bedroom home



THE SANDPIPER

4 bedroom home



GROUND FLOOR	metres	feet / inches
Kitchen/Family room	8.60 x 3.25	28' 2" x 10' 7"
Sitting room	4.89 x 3.09	16' 0" x 10' 0"

FIRST FLOOR

Bedroom 1	4.18 x 3.09	13' 8" x 10' 0"
Bedroom 2	3.88 x 3.14	12' 8" x 10' 3"
Bedroom 3	3.40 x 3.14	11' 1" x 10' 3"
Bedroom 4	3.40 x 3.12	11' 2" x 10' 2"

ovn	oven	ffzs	fridge freezer space
h	hob	cup'd	cupboard
ds	dishwasher space	◀ ▶	measuring points
ws	washing machine space		

The Sandpiper | Yew Tree Lane |

The floorplan has been produced for illustrative purposes only. Room sizes shown are between arrow points as indicated on plan. The dimensions have tolerances of + or -50mm and should not be used other than for general guidance. If specific dimensions are required, enquiries should be made to the sales consultant. The floor plans shown are not to scale. Measurements are based on the original drawings. Slight variations may occur during construction.

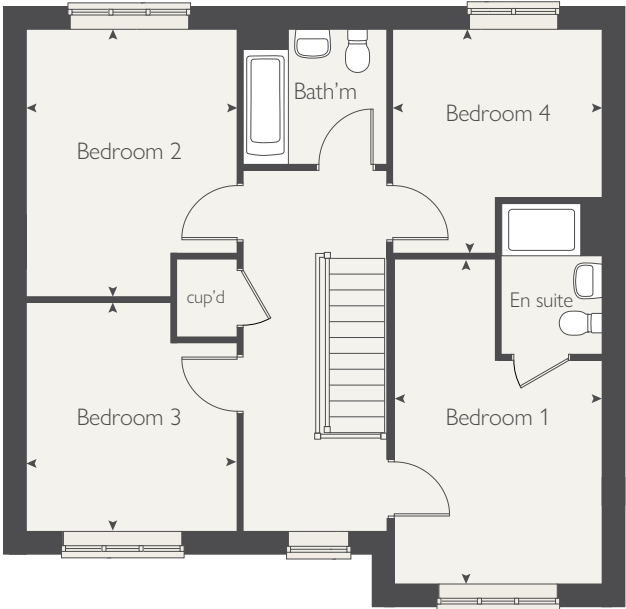
The illustrations shown are computer generated impressions of how the property may look and are indicative only. External details or finishes may vary on individual plots and homes may be built in either detached or attached styles depending on the development layout. Exact specifications, window styles and whether a property is left or right-handed may differ from plot to plot. Please speak to our sales consultant for specific plot details.

Produced by the Vistry Group Design Studio.

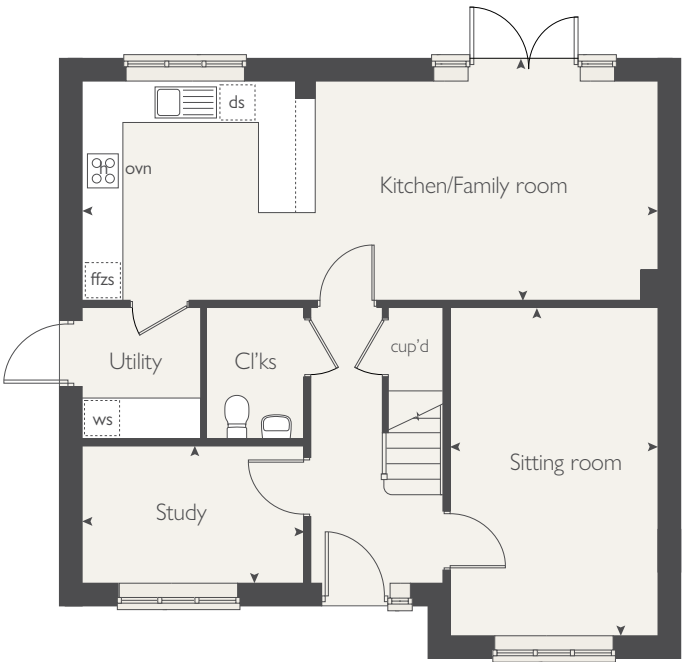
When you have finished with this leaflet, please recycle it.

DS13419 / 05.25

FIRST FLOOR



GROUND FLOOR



COUNTRYSIDE
Homes



- Low energy lighting and ventilation systems
- Electric vehicle charging point
- PV solar panels
- Waste water heat recovery

THE WAXWING

5 bedroom home



COUNTRYSIDE
Homes

THE WAXWING

5 bedroom home



GROUND FLOOR	metres	feet / inches
Kitchen/Family room	9.28 x 3.36	30' 5" x 11' 0"
Sitting room	4.66 x 3.62	15' 3" x 11' 10"
Dining room	3.28 x 2.74	10' 9" x 8' 11"

FIRST FLOOR

Bedroom 1	4.65 x 3.65	15' 3" x 11' 11"
Bedroom 2	3.60 x 3.28	11' 8" x 10' 9"
Bedroom 3	3.28 x 2.86	12' 6" x 10' 9"
Bedroom 4	3.40 x 2.41	11' 1" x 7' 10"
Bedroom 5	3.38 x 2.25	11' 1" x 7' 3"

ovn	oven	ffzs	fridge freezer
h	hob	cyl	cylinder
ds	dishwasher space	cup'd	cupboard
ws	washing machine space	◀ ▶	measuring points

The Waxwing | Yew Tree Lane |

The floorplan has been produced for illustrative purposes only. Room sizes shown are between arrow points as indicated on plan. The dimensions have tolerances of + or -50mm and should not be used other than for general guidance. If specific dimensions are required, enquiries should be made to the sales consultant. The floor plans shown are not to scale. Measurements are based on the original drawings. Slight variations may occur during construction.

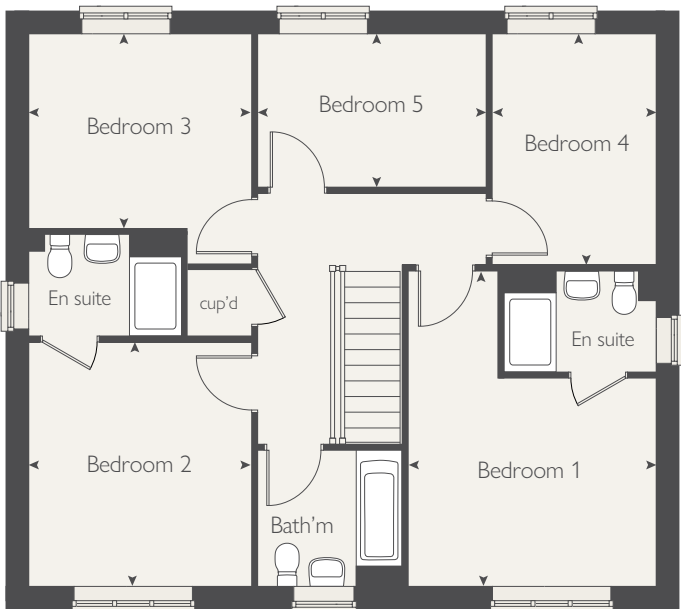
The illustrations shown are computer generated impressions of how the property may look and are indicative only. External details or finishes may vary on individual plots and homes may be built in either detached or attached styles depending on the development layout. Exact specifications, window styles and whether a property is left or right-handed may differ from plot to plot. Please speak to our sales consultant for specific plot details.

Produced by the Vistry Group Design Studio.

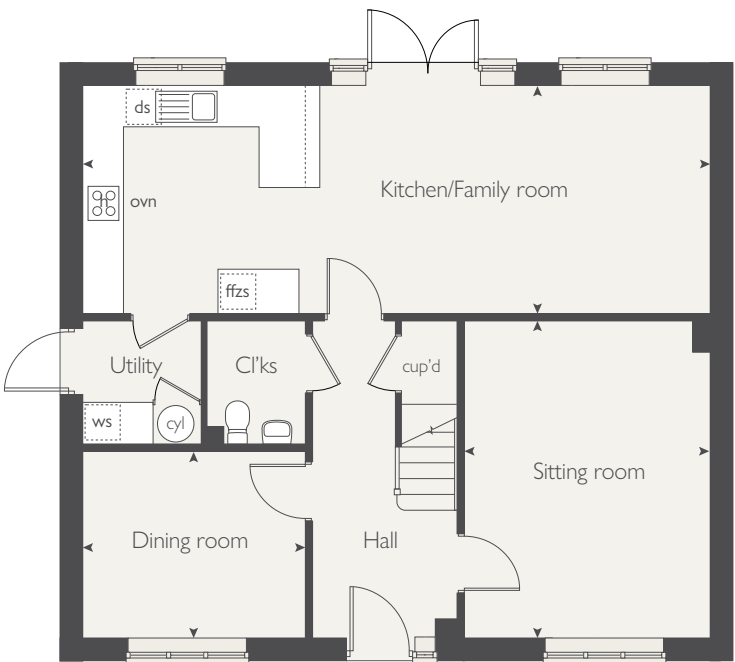
When you have finished with this leaflet, please recycle it.

DS13419 / 05.25

FIRST FLOOR



GROUND FLOOR



COUNTRYSIDE
Homes



KENSINGTON FIELDS

Harrogate

