

# St Marys Island - Azure Development update



Issue 1 | Spring 2024



## Keeping you updated

We wanted to provide you with an update on the development and what you can expect from us on the development

### Overview

Overview of what's being built. In addition, the development will provide:

- The development consists for a total of 1760 homes
- The current phase consists of 132 homes. 53 houses and 79 apartments all for private sale.
- Footpath connections to the existing riverside walk and open spaces
- Soft landscaping
- Multi Use Games Area

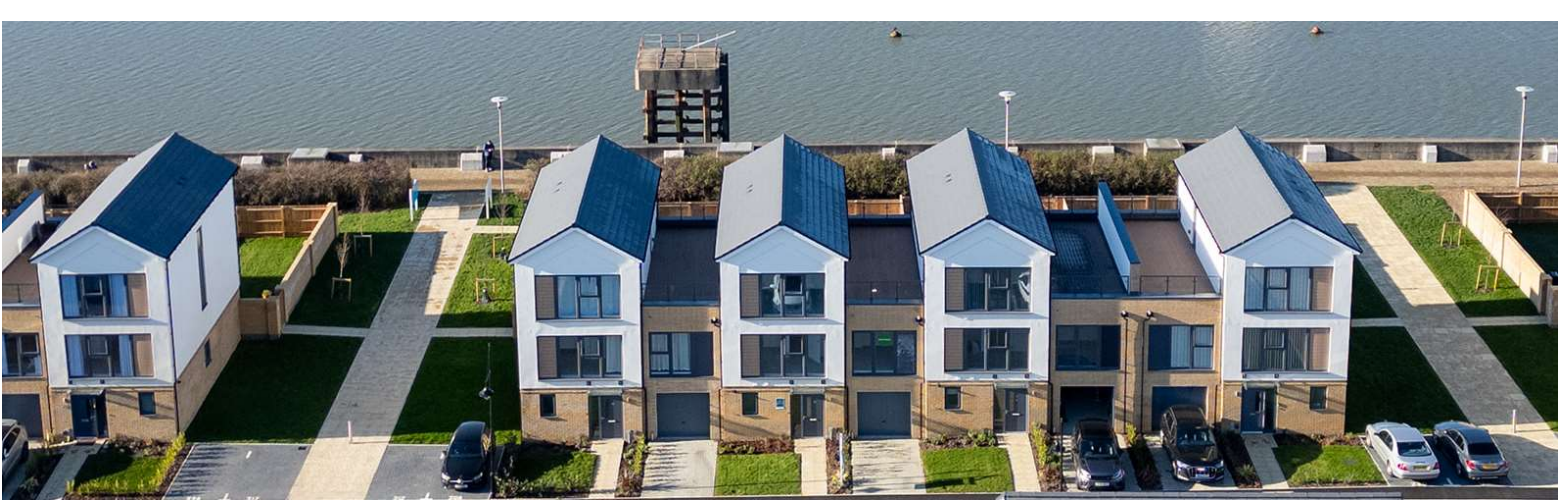
### Site activity

- Completion of remaining open spaces & landscaping.
- Remedial works to adopted roads.
- Ongoing customer care and maintenance.

### Specific items:

Connections to existing drainage & services completed.

Access Roads built.



# Timeline

- Planning reference MC2004/1207
- We welcomed our very first residents in 1998. The latest phase known as sector 15 had it's first residents move in the summer of 2021.
- Completed Linear park is now open to all residents and the completed multi use games area is due to open in June.
- Re-tarmacking of Augustus Way & Edgewater Roads was carried out in March
- Completion of 26 years of building the beautiful community of St Mary's Island, Countryside are currently winding down

# Managing agent

- Countryside have appointed Remus Management Limited as Managing Agent for the development
- Development companies provide an essential service to ensure housing estates are well maintained – including roads, footpaths & communal green spaces.
- Main point of contact for Remus is:  
h.wright@remus-mgmt.co.uk

# Ecology

- Areas of open spaces and habitation built on earlier phases
- We have installed a range of Ecological enhancements across the development including the planting of numerous new trees and planting,



# Services

GTC have installed new gas & electric mains.  
Fibre by Virgin media & Openreach.



# Development Layout



## How will the development benefit the local community?

Across the whole development, we have provided:

- St Mary's Island C of E Primary school
- Doctors & pharmacy
- Public Open space and equipped play areas
- Community centre
- 62 Extra Care homes within an Assisted Living facility.
- Retail units including hairdressers and cafe

Please be aware that the dates and information provided are correct at time of print and are dependent on a number of factors, including weather, so are subject to change.

Thank you for your patience while the construction work is taking place. We try to keep disruption to a minimum but appreciate it can be noisy and dirty at times so do contact us if you have any questions, or if you'd like to provide any feedback, by emailing:

[Azure@countrysidehomes.com](mailto:Azure@countrysidehomes.com)



**COUNTRYSIDE**  
Homes