

# THE WREN

PLOTS 279, 290, 320, 395, 401 & 462



////// ParadigmLiving



COUNTRYSIDE  
Homes



St. Michael's Hurst

BISHOP'S STORTFORD

## 4 bedroom house

However your family likes to spend their time, there will be a place for them to do as they wish at the Wren.

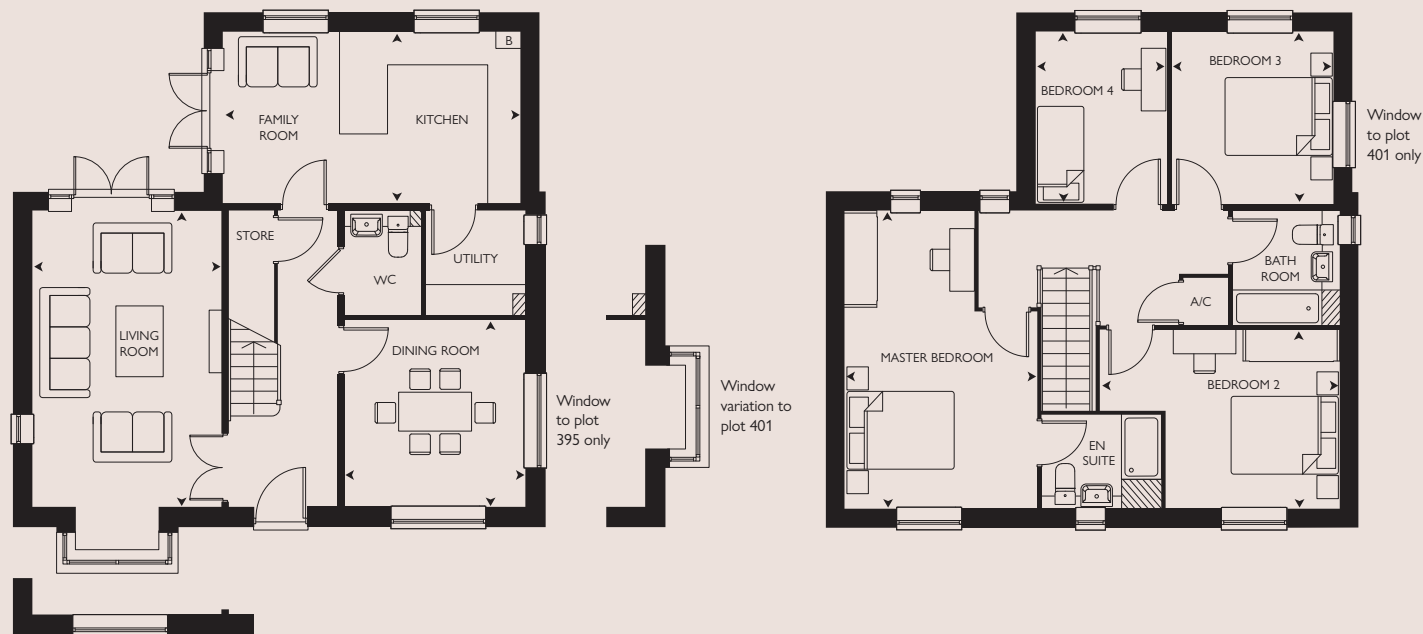
This is thanks to its clearly defined areas downstairs, which comprise an open plan kitchen/family room, living room and dining room. There are three double bedrooms to the first floor, with a cosy fourth bedroom which could become a stylish home office.

Computer generated image of The Wren plot 320. Building materials, design and landscaping may differ from those illustrated. We operate a policy of continual product development and individual features may vary. Please ask a Sales Consultant for further details. July 2023.

# THE WREN

PLOTS 279\*, 290, 320, 395, 401 & 462\*

4 bedroom house



GROUND FLOOR

FIRST FLOOR



St. Michael's Hurst

BISHOP'S STORTFORD

## GROUND FLOOR

### KITCHEN / FAMILY ROOM

5.58m x 3.22m 18'3" x 10'7"

### LIVING ROOM

5.58m x 3.55m 18'3" x 11'7"

### DINING ROOM

3.51m x 3.40m 11'6" x 11'2"

## FIRST FLOOR

### MASTER BEDROOM

5.58m x 3.60m 18'3" x 11'10"

### BEDROOM 2

3.25m x 3.34m 10'8" x 10'11"

### BEDROOM 3

3.22m x 3.02m 10'6" x 9'11"

### BEDROOM 4

3.22m x 2.46m 10'6" x 8'1"

## OVERALL INTERNAL AREA

142.8 sq m 1537 sq ft

\* = Handed Plot B = Boiler A/C = Airing cupboard

All room sizes are approximate with maximum dimensions which have been taken into the kitchen units and are not intended for carpet sizes or items of furniture. All dimensions and areas listed are to finished measurements. Countryside operates a policy of continuous product development and all room layouts may be subject to minor modifications. Kitchen, bathroom and furniture layouts shown are indicative only. Please ask Sales Consultants for detailed information regarding specific properties.