

THE LUDLOW

PLOTS 276, 294, 295, 316, 318, 399, 403, 461 & 473



////// ParadigmLiving



COUNTRYSIDE
Homes



St. Michael's Hurst

BISHOP'S STORTFORD

3 bedroom house

In the warmer months, you are sure to throw open the double doors leading from both the living room and the dining room into the garden, bringing the natural world inside. The kitchen features copious preparation space, with an island overlooking the bright and airy dining room. The double aspect master bedroom is a suite of its own, thanks to the addition of its own en suite.

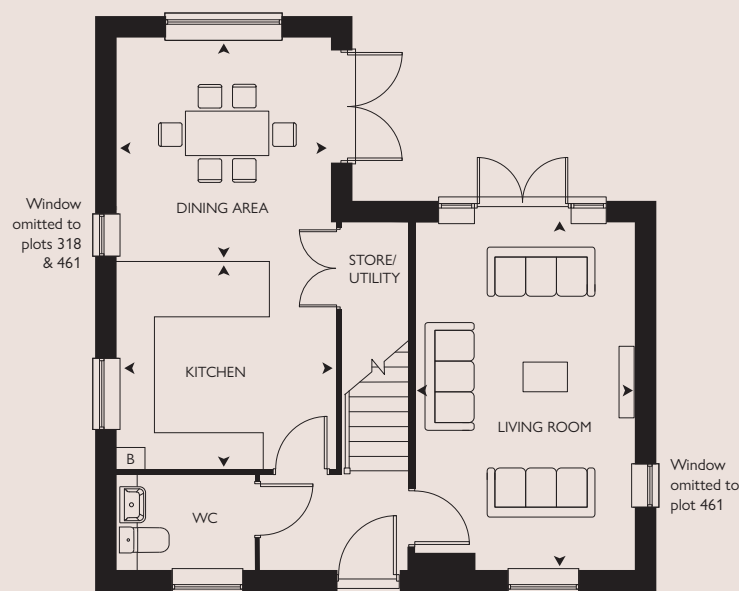
Computer generated image of The Ludlow plot 295. Building materials, design and landscaping may differ from those illustrated. We operate a policy of continual product development and individual features may vary. Please ask a Sales Consultant for further details. April 2023.

THE LUDLOW

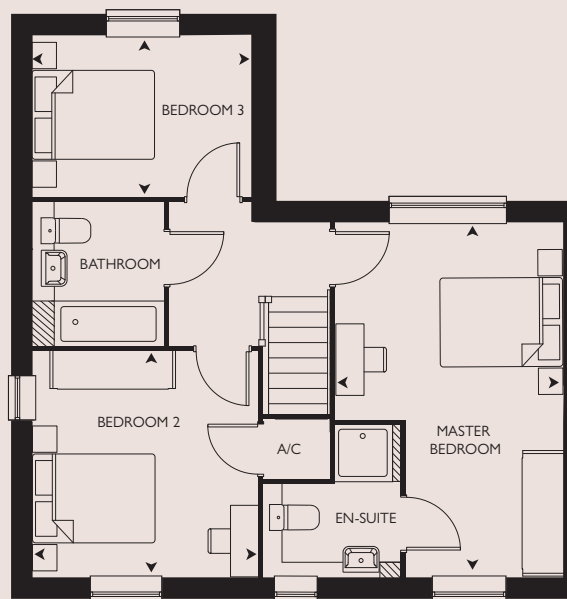
PLOTS 276*, 294, 295, 316*, 318*, 399*, 403, 461 & 473

3 bedroom house

Plot 294 has an attached garage



GROUND FLOOR



FIRST FLOOR



St. Michael's Hurst

BISHOP'S STORTFORD

GROUND FLOOR

KITCHEN

3.53m x 3.30m 11'7" x 10'10"

DINING AREA

3.33m x 3.51m 10'11" x 11'6"

LIVING ROOM

5.47m x 3.42m 17'11" x 11'3"

FIRST FLOOR

MASTER BEDROOM

5.47m x 3.48m 17'11" x 11'5"

BEDROOM 2

3.49m x 3.47m 11'5" x 11'4"

BEDROOM 3

3.33m x 2.47m 10'11" x 8'1"

OVERALL INTERNAL AREA

108.6 sq m 1169 sq ft

* = Handed Plot B = Boiler A/C = Airing cupboard

All room sizes are approximate with maximum dimensions which have been taken into the kitchen units and are not intended for carpet sizes or items of furniture. All dimensions and areas listed are to finished measurements. Countryside operates a policy of continuous product development and all room layouts may be subject to minor modifications. Kitchen, bathroom and furniture layouts shown are indicative only. Please ask Sales Consultants for detailed information regarding specific properties.