

EASTBROOK VILLAGE

Maghull





EASTBROOK VILLAGE

Maghull

countrysidehomes.com



COUNTRYSIDE
Homes

EASTBROOK VILLAGE

Maghull





- Open-plan kitchen/dining and living room
- Impressive skylight windows and French doors leading to rear garden
- Convenient downstairs storage cupboard and WC
- Two well-proportioned bedrooms
- Modern family bathroom with separate shower cubicle decorated with Porcelanosa tiles

THE ESK

2 bedroom home



COUNTRYSIDE
Homes

countrysidehomes.com

THE ESK

2 bedroom home



| GROUND FLOOR | metres | feet/inches |
|---------------|-------------|---------------|
| Kitchen | 2.90 x 4.04 | 9'6" x 13'3" |
| Dining/Living | 4.00 x 5.20 | 13'2" x 17'1" |

| FIRST FLOOR | metres | feet/inches |
|-------------|-------------|--------------|
| Bedroom 1 | 4.00 x 2.61 | 13'2" x 8'7" |
| Bedroom 2 | 4.00 x 2.46 | 13'3" x 8'1" |

The Esk
 The floorplan has been produced for illustrative purposes only. Room sizes shown are between arrow points as indicated on plan. The dimensions have tolerances of + or -50mm and should not be used other than for general guidance. If specific dimensions are required, enquiries should be made to the sales consultant. The floor plans shown are not to scale. Measurements are based on the original drawings. Slight variations may occur during construction.

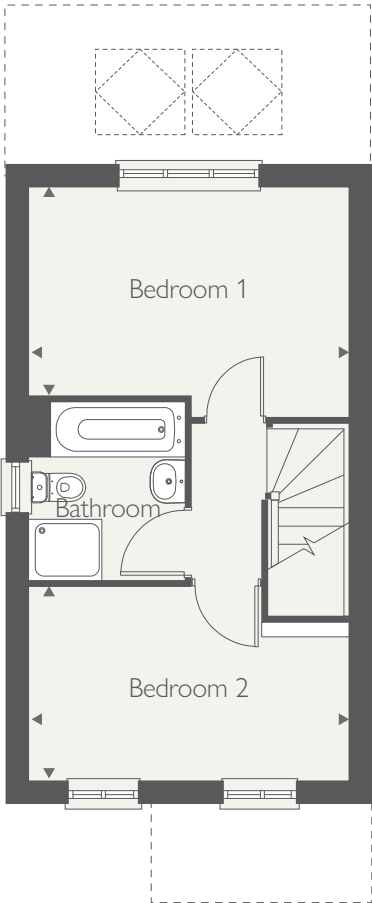
| ovn | oven | tds | tumble dryer space |
|------|-----------------------|--------------|--------------------|
| h | hob | c/c cylinder | cupboard |
| ds | dishwasher space | ◀ ▶ | measuring points |
| ws | washing machine space | ◻ | skylight windows |
| ffzs | fridge freezer space | ■ | SVP |

The illustrations shown are computer generated impressions of how the property may look and are indicative only. External details or finishes may vary on individual plots and homes may be built in either detached or attached styles depending on the development layout. Exact specifications, window styles and whether a property is left or righthanded may differ from plot to plot. Please speak to our sales consultant for specific plot details.

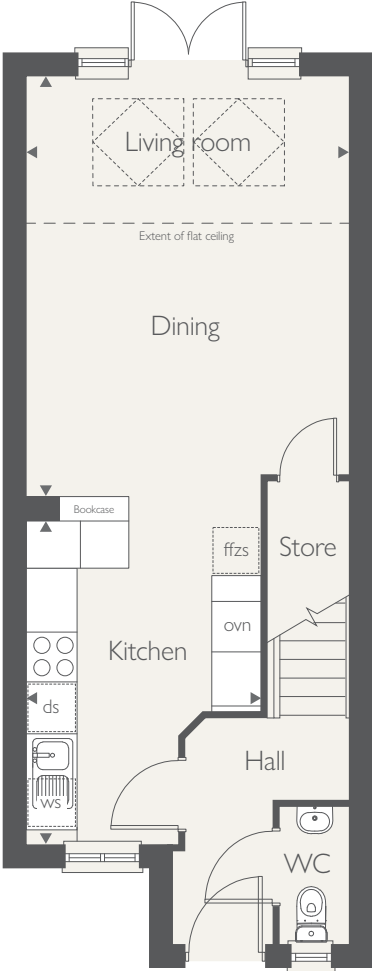
Produced by Milk.
 DS14512 / 09.25



FIRST FLOOR



GROUND FLOOR





- Open-plan kitchen / diner
- Light enhancing Skylight windows & French doors
- Large separate living room
- Under stairs storage

THE ELLESMERE

3 bedroom home



COUNTRYSIDE
Homes

THE ELLESMERE

3 bedroom home



| GROUND FLOOR | metres | feet / inches |
|---------------------|-------------|----------------|
| Kitchen/dining room | 5.34 x 3.29 | 17'6" x 10'10" |
| Living room | 3.06 x 4.61 | 10'0" x 15'2" |

FIRST FLOOR

| | | |
|-----------|-------------|----------------|
| Bedroom 1 | 2.71 x 3.33 | 8'11" x 10'11" |
| Bedroom 2 | 2.71 x 3.13 | 8'11" x 10'4" |
| Bedroom 3 | 2.56 x 1.97 | 8'5" x 6'6" |

The Ellesmere

This floorplan has been produced for illustrative purposes only. Room sizes shown are between arrow points as indicated on plan. The dimensions have tolerances of + or -50mm and should not be used other than for general guidance. If specific dimensions are required, enquiries should be made to the sales consultant.

| | | | |
|------|-----------------------|-----|-------------------|
| h | hob | c/c | cylinder cupboard |
| ds | dishwasher space | ◄ ► | measuring points |
| ws | washing machine space | ◊ | skylight windows |
| ffzs | fridge freezer space | ■ | SVP |
| tds | tumble dryer space | | |

* Future storage provision for hot water cylinder

Please refer to the sales consultant for specific plot details as the illustrations shown are computer generated impressions of how the property may look so are indicative only. External details or finishes may vary on individual plots and homes may be built in either detached or attached styles depending on the development layout. Exact specifications, window styles and whether a property is left or right handed may differ from plot to plot.

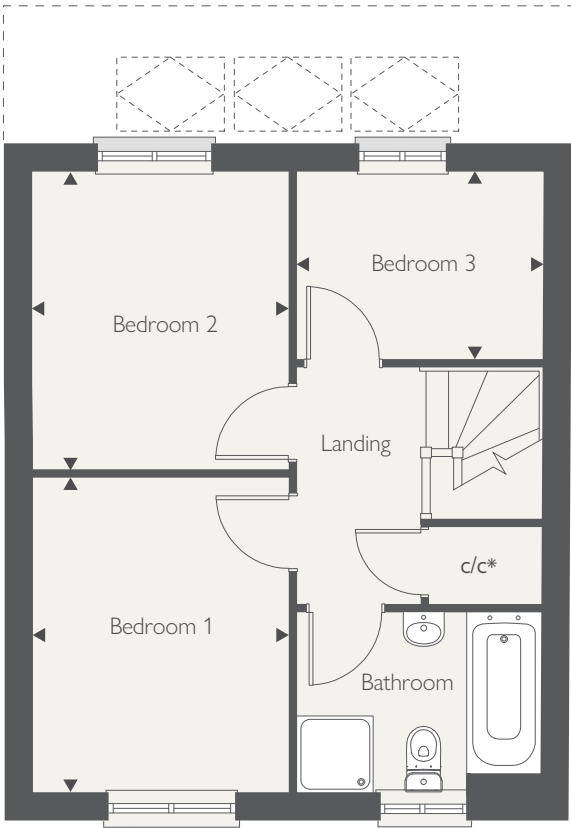
The floorplans shown are not to scale. Measurements are based on the original drawings. Slight variations may occur during construction.

Produced by the Vistry Group Design Studio.

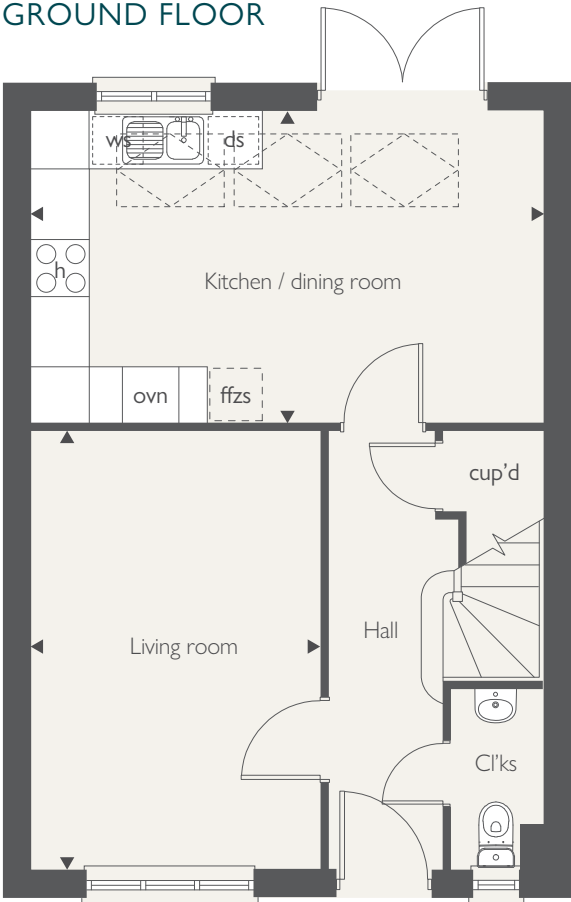
DS14512 / 09.25



FIRST FLOOR



GROUND FLOOR





- Stylish open-plan kitchen/dining room
- Impressive skylight windows and French doors leading to rear garden
- Spacious separate living room
- Three well-proportioned bedrooms
- Modern family bathroom with separate shower cubicle decorated with Porcelanosa tiles

THE LONGFORD

3 bedroom home



COUNTRYSIDE
Homes

THE LONGFORD

3 bedroom home



| GROUND FLOOR | metres | feet/inches |
|----------------|-------------|----------------|
| Kitchen/Dining | 4.07 x 5.34 | 13'4" x 17'6" |
| Living Room | 4.49 x 3.08 | 14'7" x 10'10" |

| FIRST FLOOR | metres | feet/inches |
|-------------|-------------|-------------|
| Bedroom 1 | 3.40 x 2.73 | 11'2" x 9' |
| Bedroom 2 | 3.06 x 2.73 | 10'1" x 9' |
| Bedroom 3 | 2.54 x 1.94 | 8'3" x 6'4" |

The Longford
The floorplan has been produced for illustrative purposes only. Room sizes shown are between arrow points as indicated on plan. The dimensions have tolerances of + or -50mm and should not be used other than for general guidance. If specific dimensions are required, enquiries should be made to the sales consultant. The floor plans shown are not to scale. Measurements are based on the original drawings. Slight variations may occur during construction.

| | | | |
|------|-----------------------|-----------------------|--------------------|
| ovn | oven | tds | tumble dryer space |
| h | hob | c/c cylinder cupboard | |
| ds | dishwasher space | ◀ ▶ measuring points | |
| ws | washing machine space | ◻ skylight windows | |
| ffzs | fridge freezer space | ■ | SVP |

* Future storage provision for hot water cylinder

The illustrations shown are computer generated impressions of how the property may look and are indicative only. External details or finishes may vary on individual plots and homes may be built in either detached or attached styles depending on the development layout. Exact specifications, window styles and whether a property is left or righthanded may differ from plot to plot. Please speak to our sales consultant for specific plot details.

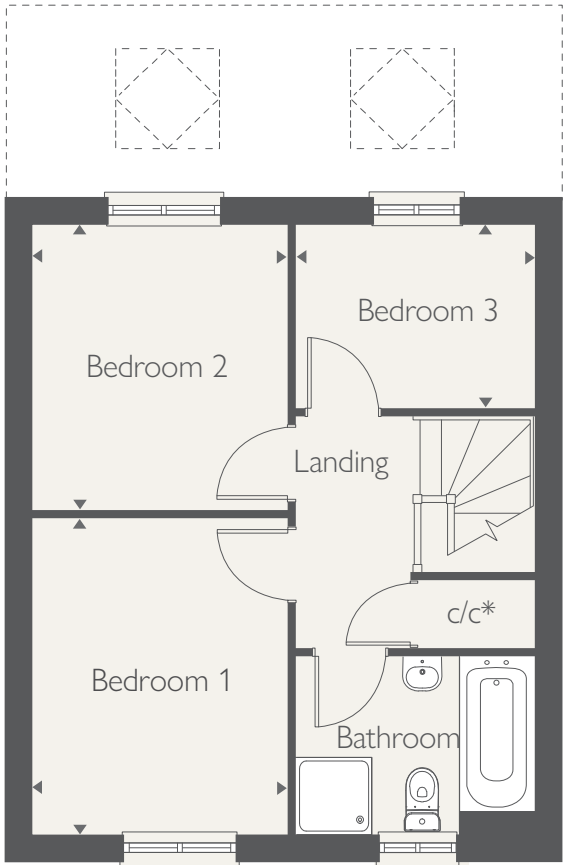
Produced by Milk.

DS14512 / 09:25

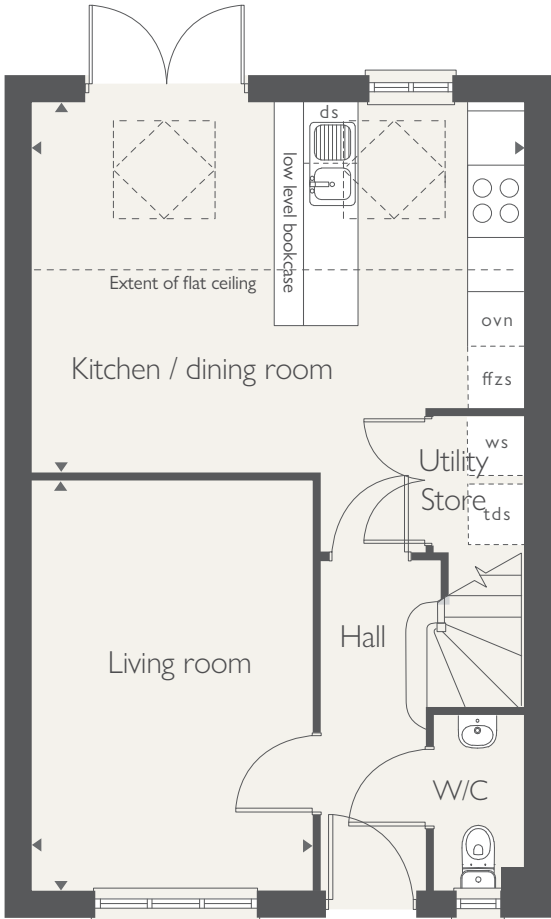


COUNTRYSIDE
Homes

FIRST FLOOR



GROUND FLOOR





- Open-plan kitchen / diner
- Light enhancing Skylight windows & French doors
- Separate utility room
- Spacious living room with feature bay window

THE NEW ASHBOURNE

3 bedroom home



COUNTRYSIDE
Homes

countrysidepartnerships.com

THE NEW ASHBOURNE

3 bedroom home



| GROUND FLOOR | metres | feet / inches |
|-----------------------|-------------|----------------|
| Kitchen / dining room | 5.33 x 3.45 | 17'6" x 11'4" |
| Living room | 3.19 x 4.54 | 10'5" x 14'11" |

| FIRST FLOOR | metres | feet / inches |
|-------------|-------------|---------------|
| Bedroom 1 | 2.86 x 4.81 | 9'5" x 15'9" |
| Bedroom 2 | 3.06 x 3.20 | 10'0" x 10'6" |
| Bedroom 3 | 3.06 x 2.54 | 10'0" x 8'4" |

The New Ashbourne
 This floorplan has been produced for illustrative purposes only. Room sizes shown are between arrow points as indicated on plan. The dimensions have tolerances of + or -50mm and should not be used other than for general guidance. If specific dimensions are required, enquiries should be made to the sales consultant.

| | | | |
|------|-----------------------|-----|-------------------|
| h | hob | c/c | cylinder cupboard |
| dw | dishwasher | ◄ ► | measuring points |
| ws | washing machine space | ◊ | skylight windows |
| ffzs | fridge freezer space | ■ | SVP |
| tds | tumble dryer space | | |

* Future storage provision for hot water cylinder

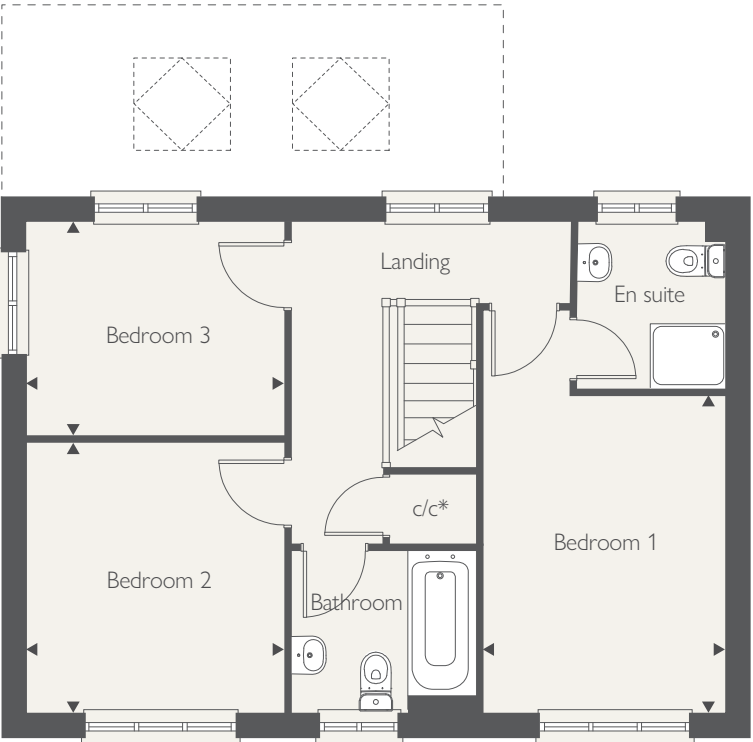
Please refer to the sales consultant for specific plot details as the illustrations shown are computer generated impressions of how the property may look so are indicative only. External details or finishes may vary on individual plots and homes may be built in either detached or attached styles depending on the development layout. Exact specifications, window styles and whether a property is left or right handed may differ from plot to plot.

The floorplans shown are not to scale. Measurements are based on the original drawings. Slight variations may occur during construction.

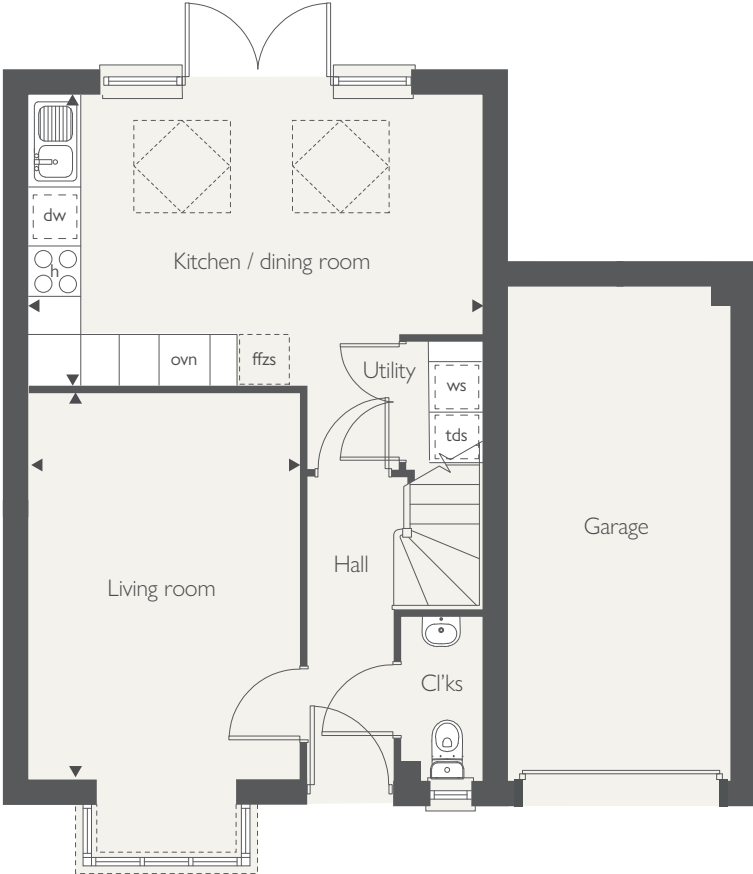
Produced by the Vistry Group Design Studio.

DS14512 / 09.25

FIRST FLOOR



GROUND FLOOR





- Stylish open-plan kitchen/dining room
- Impressive skylight windows and French doors leading to rear garden
- Spacious separate living room with beautiful bay window
- Master bedroom with en-suite
- Two further well-proportioned bedrooms
- Modern family bathroom
- Single garage

THE NEW ASHBOURNE FCT

3 bedroom home



COUNTRYSIDE
Homes

countrysidehomes.com

THE NEW ASHBOURNE FCT

3 bedroom home



| GROUND FLOOR | metres | feet/inches |
|-----------------------|-------------|----------------|
| Kitchen / dining room | 5.29 x 3.41 | 17'5" x 11'2" |
| Living room | 3.10 x 4.50 | 10'2" x 14'10" |

| FIRST FLOOR | metres | feet/inches |
|-------------|-------------|--------------|
| Bedroom 1 | 2.83 x 3.70 | 9'3" x 12'2" |
| Bedroom 2 | 3.05 x 3.17 | 10' x 10'5" |
| Bedroom 3 | 3.05 x 2.52 | 10' x 8'3" |

| | | | |
|------|-----------------------|-----|--------------------|
| ovn | oven | tds | tumble dryer space |
| h | hob | c/c | cylinder cupboard |
| ds | dishwasher space | ◀ ▶ | measuring points |
| ws | washing machine space | □ | skylight windows |
| ffzs | fridge freezer | | |

* Future storage provision for hot water cylinder

The New Ashbourne

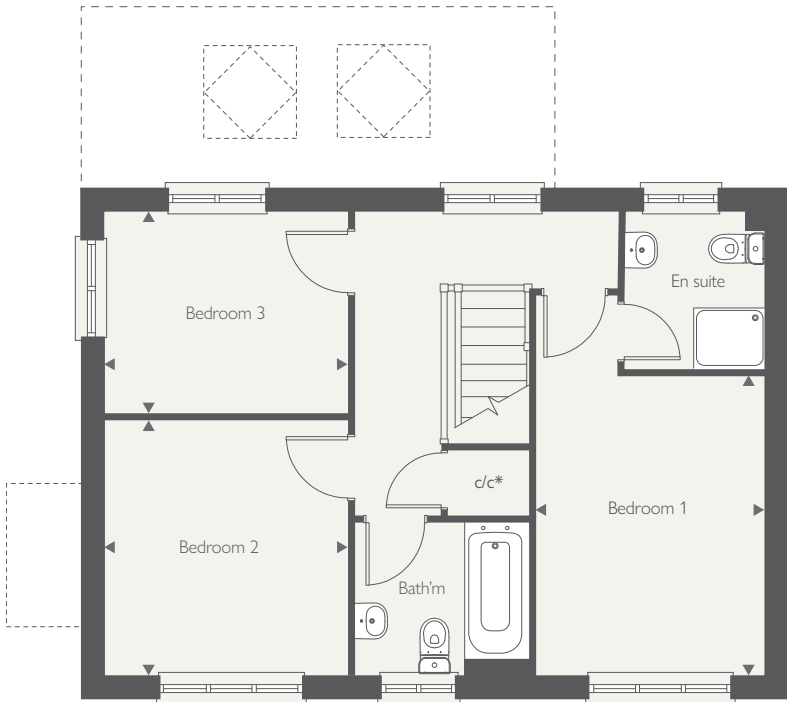
The floorplan has been produced for illustrative purposes only. Room sizes shown are between arrow points as indicated on plan. The dimensions have tolerances of + or -50mm and should not be used other than for general guidance. If specific dimensions are required, enquiries should be made to the sales consultant. The floor plans shown are not to scale. Measurements are based on the original drawings. Slight variations may occur during construction.

The illustrations shown are computer generated impressions of how the property may look and are indicative only. External details or finishes may vary on individual plots and homes may be built in either detached or attached styles depending on the development layout. Exact specifications, window styles and whether a property is left or right-handed may differ from plot to plot. Please speak to our sales consultant for specific plot details.

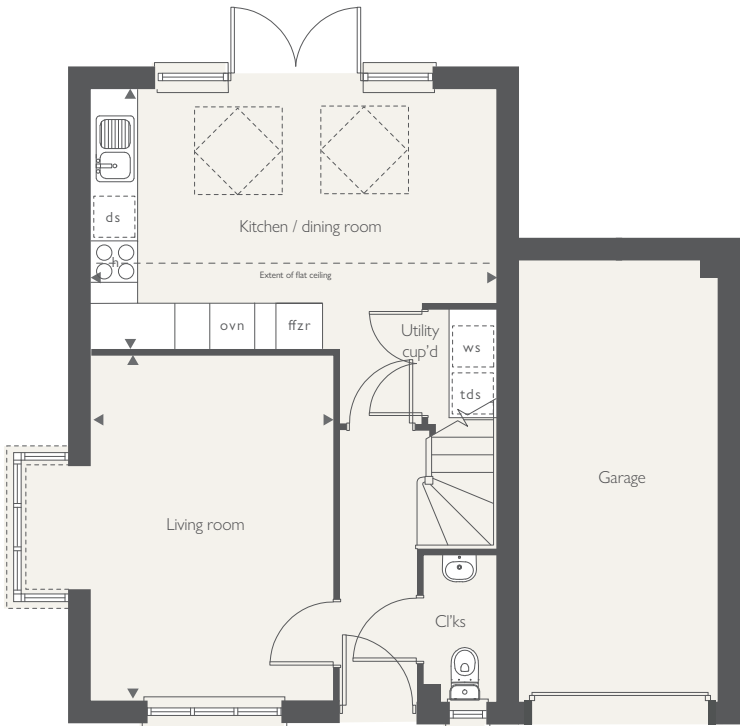
Produced by Milk.

DS14512 / 09.25

FIRST FLOOR



GROUND FLOOR



COUNTRYSIDE
Homes



- Open-plan kitchen/dining and living room
- Impressive skylight windows and French doors leading to rear garden
- Convenient downstairs store room and WC
- Private master bedroom with en-suite, dressing area and skylight windows
- Two further well-proportioned bedrooms
- Modern family bathroom

THE NEW STAMFORD

3 bedroom home

countrysidehomes.com



COUNTRYSIDE
Homes

THE NEW STAMFORD

3 bedroom home



| GROUND FLOOR | metres | feet/inches |
|---------------|-------------|---------------|
| Kitchen | 2.94 x 4.48 | 9'8" x 14'9" |
| Living/Dining | 4.00 x 5.04 | 13'2" x 16'7" |

| FIRST FLOOR | metres | feet/inches |
|-------------|-------------|--------------|
| Bedroom 2 | 4.00 x 2.93 | 13'2" x 9'8" |
| Bedroom 3 | 1.94 x 2.91 | 6'4" x 9'7" |

| SECOND FLOOR | metres | feet/inches |
|--------------|--------------------------|---------------|
| Bedroom 1 | 4.00 x 5.62 [#] | 13'2" x 18'5" |

#Headroom over 1.5m

The New Stamford

The floorplan has been produced for illustrative purposes only. Room sizes shown are between arrow points as indicated on plan. The dimensions have tolerances of + or -50mm and should not be used other than for general guidance. If specific dimensions are required, enquiries should be made to the sales consultant. The floor plans shown are not to scale. Measurements are based on the original drawings. Slight variations may occur during construction.

| ovn | oven | tds | tumble dryer space |
|------|-----------------------|--------------|--------------------|
| h | hob | c/c cylinder | cupboard |
| ds | dishwasher space | ◀ ▶ | measuring points |
| ws | washing machine space | □ | skylight windows |
| ffzs | fridge freezer space | ■ | SVP |

The illustrations shown are computer generated impressions of how the property may look and are indicative only. External details or finishes may vary on individual plots and homes may be built in either detached or attached styles depending on the development layout. Exact specifications, window styles and whether a property is left or righthanded may differ from plot to plot. Please speak to our sales consultant for specific plot details.

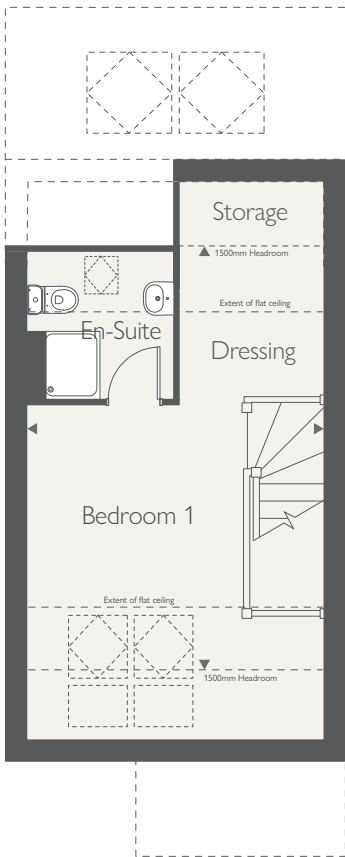
Produced by Milk.

DS14512 / 09.25

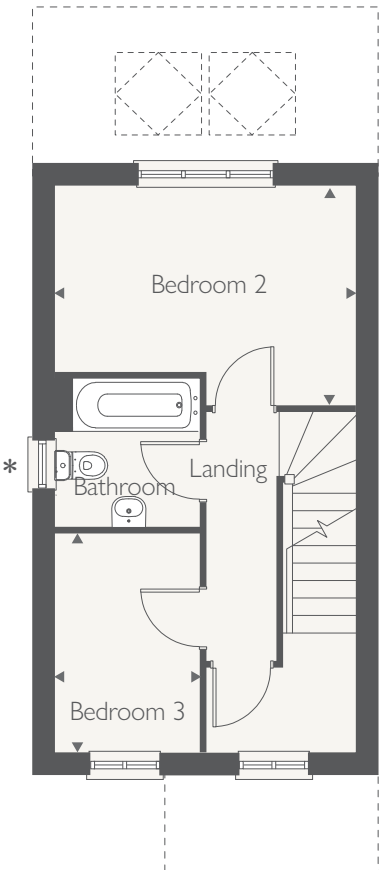


COUNTRYSIDE
Homes

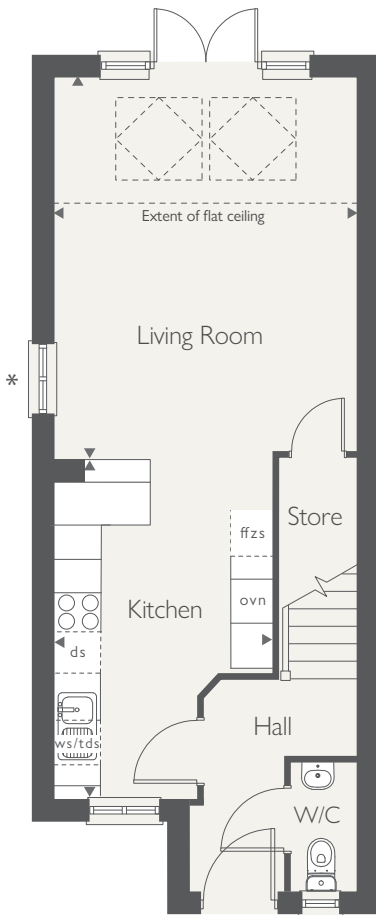
SECOND FLOOR



FIRST FLOOR



GROUND FLOOR





- Open-plan kitchen / diner
- Light enhancing Skylight windows & French doors
- Separate utility room
- Spacious living room with feature bay window

THE NEW WALTON

3 bedroom home



COUNTRYSIDE
Homes

THE NEW WALTON

3 bedroom home



| GROUND FLOOR | metres | feet / inches |
|---------------------------|-------------|---------------|
| Kitchen / family / dining | 5.29 x 4.29 | 17'4" x 14'1" |
| Living room | 4.30 x 2.71 | 14'1" x 8'11" |

FIRST FLOOR

| | | |
|-----------|-------------|---------------|
| Bedroom 1 | 3.07 x 4.27 | 10'1" x 14'1" |
| Bedroom 2 | 3.38 x 2.82 | 11'1" x 9'3" |
| Bedroom 3 | 2.50 x 3.18 | 8'2" x 10'5" |

The New Walton

This floorplan has been produced for illustrative purposes only. Room sizes shown are between arrow points as indicated on plan. The dimensions have tolerances of + or -50mm and should not be used other than for general guidance. If specific dimensions are required, enquiries should be made to the sales consultant.

| | | | |
|------|-----------------------|-----|-------------------|
| h | hob | c/c | cylinder cupboard |
| ds | dishwasher space | ◄ ► | measuring points |
| ws | washing machine space | ◻ | skylight windows |
| ffzs | fridge freezer space | ■ | SVP |
| tds | tumble dryer space | | |

* Future storage provision for hot water cylinder

Please refer to the sales consultant for specific plot details as the illustrations shown are computer generated impressions of how the property may look so are indicative only. External details or finishes may vary on individual plots and homes may be built in either detached or attached styles depending on the development layout. Exact specifications, window styles and whether a property is left or right handed may differ from plot to plot.

The floorplans shown are not to scale. Measurements are based on the original drawings. Slight variations may occur during construction.

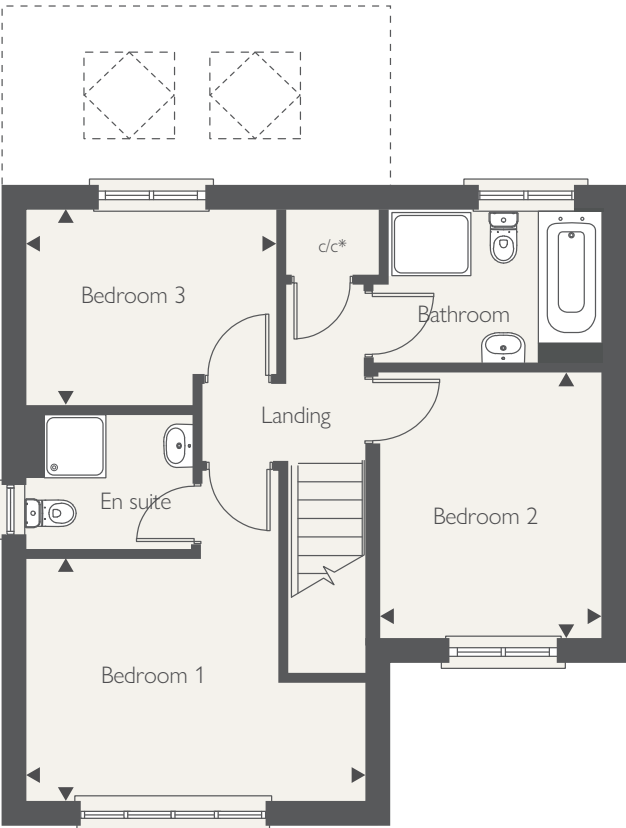
Produced by the Vistry Group Design Studio.

DS14512 / 09.25

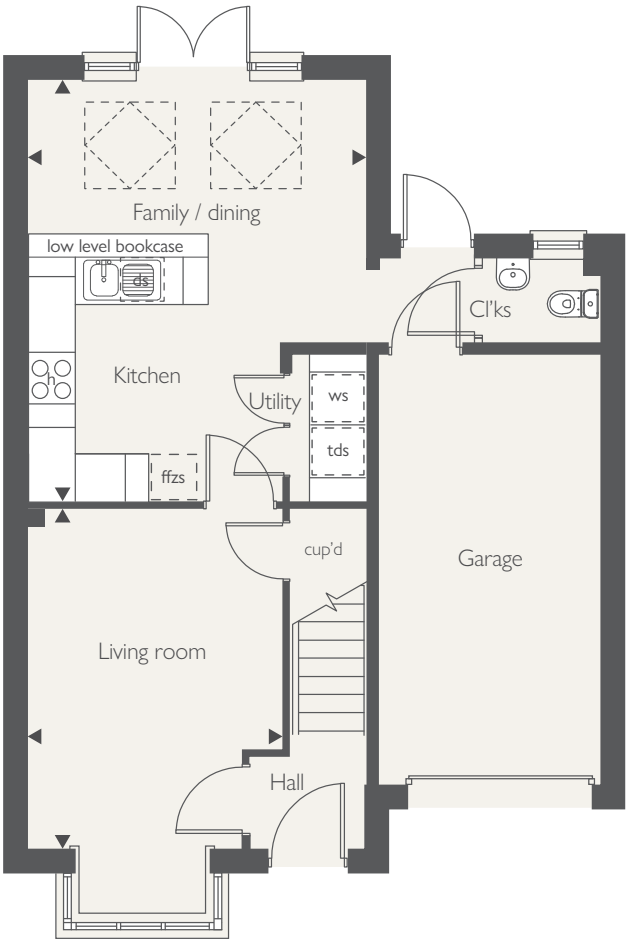


COUNTRYSIDE
Homes

FIRST FLOOR



GROUND FLOOR





- Stylish open-plan kitchen and dining/family room
- Impressive skylight windows and French doors leading to rear garden
- Master bedroom with en-suite
- Two further well-proportioned bedrooms
- Modern family bathroom

THE ASHOP

3 bedroom home



COUNTRYSIDE
Homes

countrysidehomes.com

THE ASHOP

3 bedroom home



| GROUND FLOOR | metres | feet/inches |
|-----------------------|-------------|---------------|
| Kitchen/Dining/Family | 5.97 x 5.25 | 19'6" x 17'2" |
| Living Room | 4.35 x 3.08 | 14'4" x 10'1" |

| FIRST FLOOR | metres | feet/inches |
|-------------|-------------|---------------|
| Bedroom 1 | 3.61 x 3.07 | 11'8" x 10'1" |
| Bedroom 2 | 3.16 x 2.61 | 10'4" x 8'6" |
| Bedroom 3 | 2.54 x 2.11 | 8'3" x 6'9" |

The Ashop
 The floorplan has been produced for illustrative purposes only. Room sizes shown are between arrow points as indicated on plan. The dimensions have tolerances of + or -50mm and should not be used other than for general guidance. If specific dimensions are required, enquiries should be made to the sales consultant. The floor plans shown are not to scale. Measurements are based on the original drawings. Slight variations may occur during construction.

| | | | |
|------|-----------------------|-----------------------|--------------------|
| ovn | oven | tds | tumble dryer space |
| h | hob | c/c cylinder cupboard | |
| ds | dishwasher space | ◀ ▶ measuring points | |
| ws | washing machine space | ☐ skylight windows | |
| ffzs | fridge freezer space | ■ | SVP |

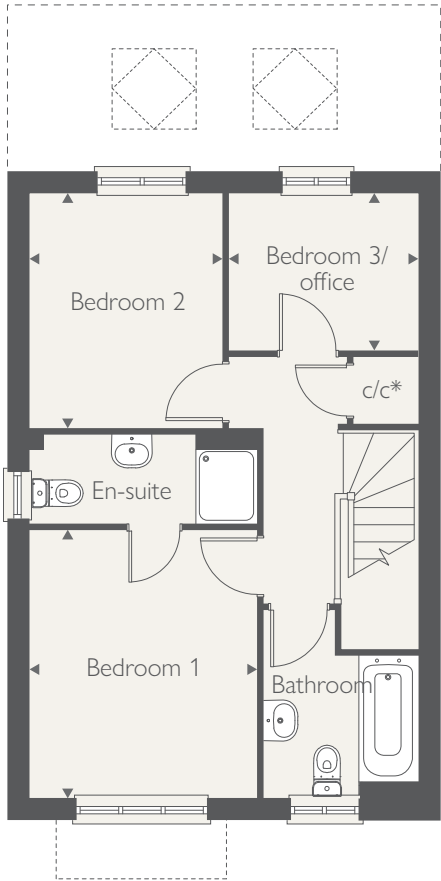
* Future storage provision for hot water cylinder

The illustrations shown are computer generated impressions of how the property may look and are indicative only. External details or finishes may vary on individual plots and homes may be built in either detached or attached styles depending on the development layout. Exact specifications, window styles and whether a property is left or righthanded may differ from plot to plot. Please speak to our sales consultant for specific plot details.

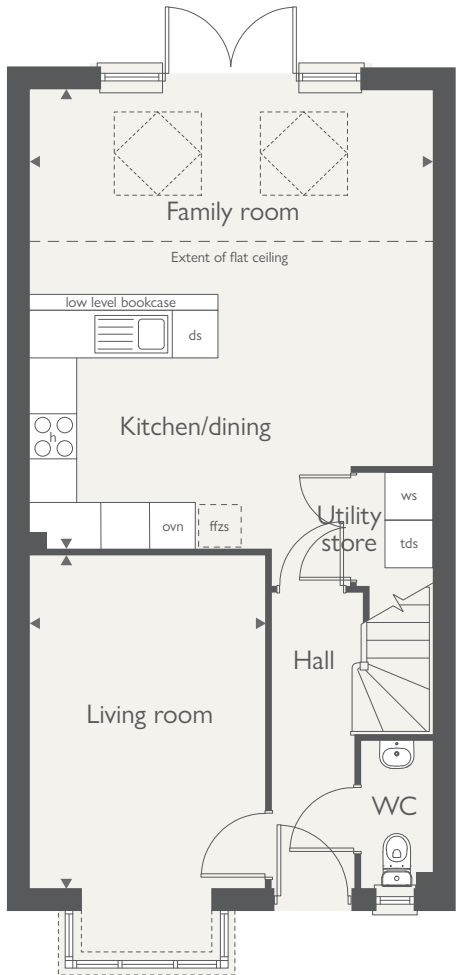
Produced by Milk.

DS14512 / 09.25

FIRST FLOOR



GROUND FLOOR





- Stylish open-plan kitchen/dining room
- Impressive skylight windows and French doors
- Spacious separate living room with beautiful bay window
- Convenient downstairs utility room and WC
- Private Bedroom 1 with en suite and skylight windows
- Three further well-proportioned bedrooms
- Modern family bathroom with separate shower cubicle

THE DUNHAM

4 bedroom home



COUNTRYSIDE
Homes

THE DUNHAM

4 bedroom home



GROUND FLOOR

| | metres | feet/inches |
|-----------------------|-------------|---------------|
| Kitchen / dining room | 5.40 x 4.02 | 17'8" x 13'3" |
| Living room | 3.12 x 4.56 | 10'3" x 15' |

FIRST FLOOR

| | | |
|--------------------|-------------|--------------|
| Bedroom 2 | 3.17 x 2.74 | 10'4" x 9'0" |
| Bedroom 3 | 3.28 x 2.74 | 10'8" x 9'0" |
| Bedroom 4 / Office | 2.55 x 1.94 | 8'4" x 6'4" |

SECOND FLOOR

| | | |
|-----------|-------------|---------------|
| Bedroom 1 | 4.05 x 3.55 | 13'3" x 11'6" |
|-----------|-------------|---------------|

| | | | |
|------|-----------------------|-----|--------------------|
| ovn | oven | tds | tumble dryer space |
| h | hob | c/c | cylinder cupboard |
| ds | dishwasher space | ◀ ▶ | measuring points |
| ws | washing machine space | ◊ | skylight windows |
| ffzs | fridge freezer space | ■ | SVP |

* Future storage provision for hot water cylinder

The Dunham

The floorplan has been produced for illustrative purposes only. Room sizes shown are between arrow points as indicated on plan. The dimensions have tolerances of + or -50mm and should not be used other than for general guidance. If specific dimensions are required, enquiries should be made to the sales consultant. The floor plans shown are not to scale. Measurements are based on the original drawings. Slight variations may occur during construction.

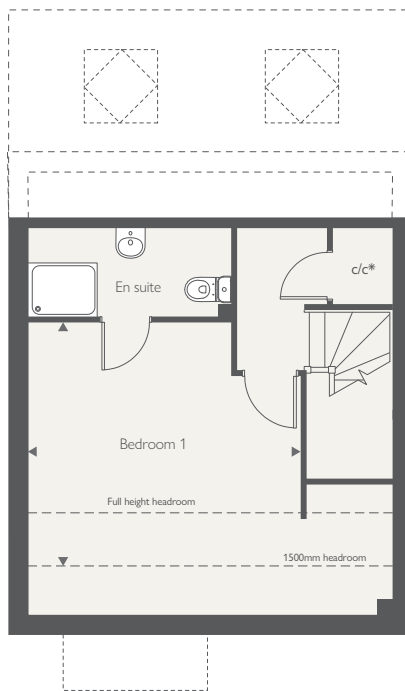
The illustrations shown are computer generated impressions of how the property may look and are indicative only. External details or finishes may vary on individual plots and homes may be built in either detached or attached styles depending on the development layout. Exact specifications, window styles and whether a property is left or right-handed may differ from plot to plot. Please speak to our sales consultant for specific plot details.

DS14512 / 09.25

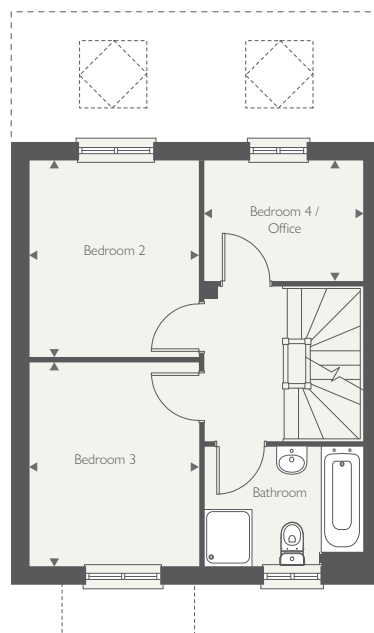


COUNTRYSIDE
Homes

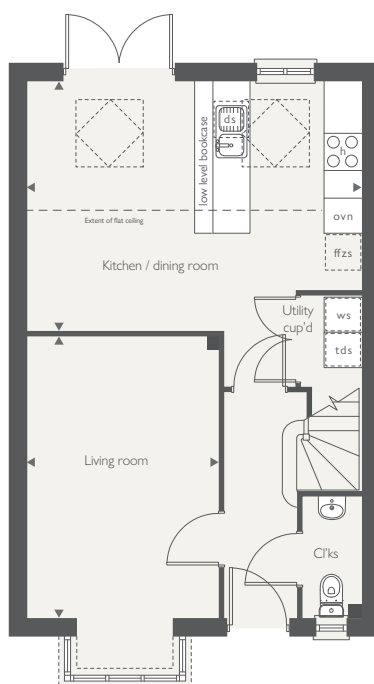
SECOND FLOOR



FIRST FLOOR



GROUND FLOOR





- Stylish open-plan kitchen/dining/family room
- Impressive skylight windows and French doors leading to rear garden
- Spacious separate living room with beautiful bay window
- Convenient downstairs WC and integral garage access
- Spacious master bedroom with en-suite
- Three further well-proportioned bedrooms
- Modern family bathroom

THE LYMINGTON

4 bedroom home



COUNTRYSIDE
Homes

countrysidehomes.com

THE LYMINGTON

4 bedroom home



| GROUND FLOOR | metres | feet/inches |
|-----------------------|-------------|---------------|
| Kitchen/Dining/Family | 5.28 x 5.67 | 17'4" x 18'7" |
| Living Room | 3.10 x 4.39 | 10'2" x 14'5" |

FIRST FLOOR

| | | |
|------------------|-------------|---------------|
| Bedroom 1 | 2.85 x 5.32 | 9'4" x 17'6" |
| Bedroom 2 | 3.66 x 2.98 | 12' x 9'9" |
| Bedroom 3 | 3.00 x 3.10 | 9'10" x 10'2" |
| Bedroom 4/Office | 2.58 x 2.05 | 8'6" x 6'9" |

The Lymington

The floorplan has been produced for illustrative purposes only. Room sizes shown are between arrow points as indicated on plan. The dimensions have tolerances of + or -50mm and should not be used other than for general guidance. If specific dimensions are required, enquiries should be made to the sales consultant. The floor plans shown are not to scale. Measurements are based on the original drawings. Slight variations may occur during construction.

| | | | |
|------|-----------------------|--------------|--------------------|
| ovn | oven | tds | tumble dryer space |
| h | hob | c/c cylinder | cupboard |
| ds | dishwasher space | ◀ ▶ | measuring points |
| ws | washing machine space | □ | skylight windows |
| ffzs | fridge freezer space | ■ | SVP |

* Future storage provision for hot water cylinder

The illustrations shown are computer generated impressions of how the property may look and are indicative only. External details or finishes may vary on individual plots and homes may be built in either detached or attached styles depending on the development layout. Exact specifications, window styles and whether a property is left or righthanded may differ from plot to plot. Please speak to our sales consultant for specific plot details.

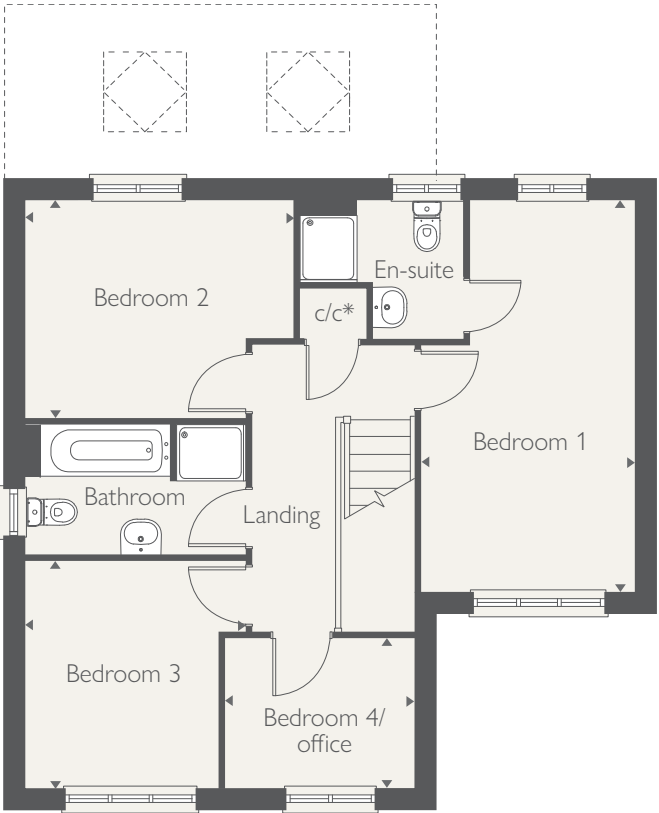
Produced by Milk.

DS14512 / 09.25

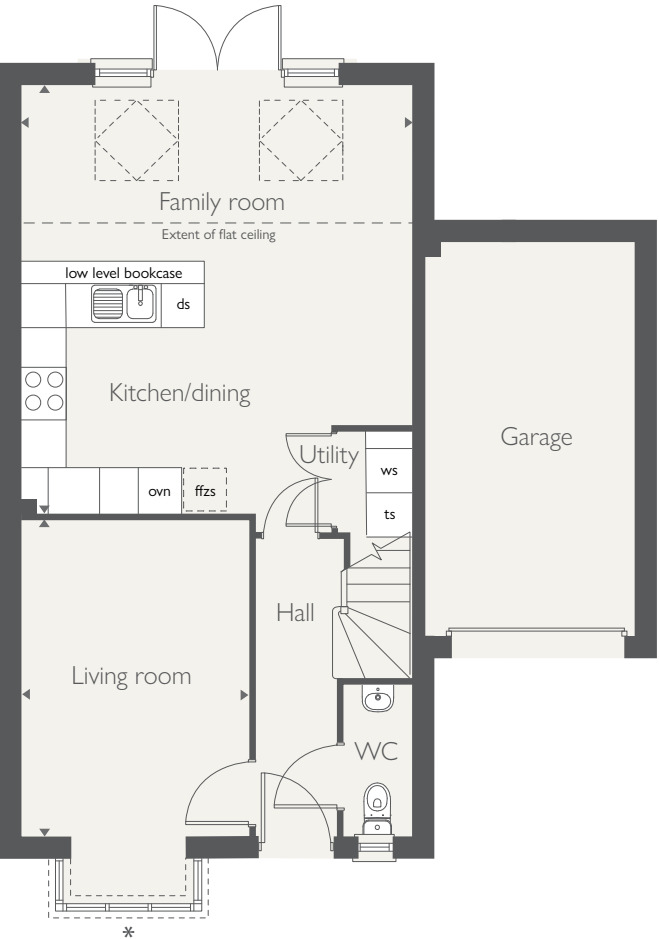


COUNTRYSIDE
Homes

FIRST FLOOR



GROUND FLOOR





- Spacious living room with stylish bay window
- Stylish open-plan kitchen/dining room
- Impressive skylight windows and French doors leading to rear garden
- Convenient downstairs utility room, WC and integral garage access
- Master bedroom with en-suite and large bay window
- Three further well-proportioned bedrooms
- Modern family bathroom with separate shower cubicle decorated with Porcelanosa tiles

THE OAKHAM

4 bedroom home



COUNTRYSIDE
Homes

countrysidehomes.com

THE OAKHAM

4 bedroom home



| GROUND FLOOR | metres | feet/inches |
|-----------------------|-------------|---------------|
| Kitchen/Dining/Family | 5.40 x 5.60 | 17'9" x 18'4" |
| Living Room | 3.41 x 4.27 | 14' x 11'2" |

FIRST FLOOR

| | | |
|------------------|-------------|---------------|
| Bedroom 1 | 3.41 x 3.05 | 11'2" x 10' |
| Bedroom 2 | 3.90 x 3.68 | 12'9" x 12'1" |
| Bedroom 3 | 2.62 x 3.22 | 8'7" x 10'6" |
| Bedroom 4/Office | 2.39 x 2.76 | 7'10" x 9'1" |

The Oakham

The floorplan has been produced for illustrative purposes only. Room sizes shown are between arrow points as indicated on plan. The dimensions have tolerances of + or -50mm and should not be used other than for general guidance. If specific dimensions are required, enquiries should be made to the sales consultant. The floor plans shown are not to scale. Measurements are based on the original drawings. Slight variations may occur during construction.

| ovn | oven | tds | tumble dryer space |
|------|-----------------------|--------------|--------------------|
| h | hob | c/c cylinder | cupboard |
| ds | dishwasher space | ◀ ▶ | measuring points |
| ws | washing machine space | □ | skylight windows |
| ffzs | fridge freezer space | ■ | SVP |

* Future storage provision for hot water cylinder

The illustrations shown are computer generated impressions of how the property may look and are indicative only. External details or finishes may vary on individual plots and homes may be built in either detached or attached styles depending on the development layout. Exact specifications, window styles and whether a property is left or righthanded may differ from plot to plot. Please speak to our sales consultant for specific plot details.

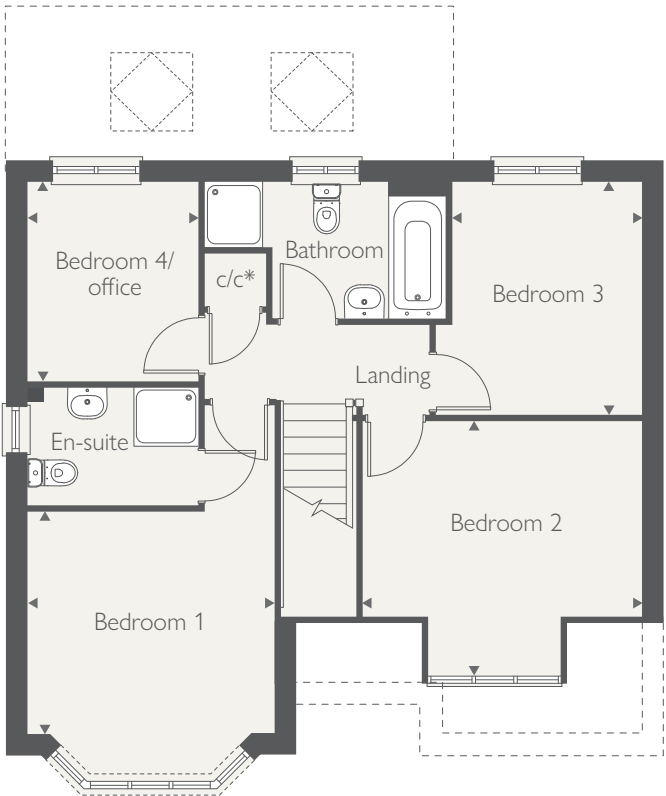
Produced by Milk.

DS14512 / 09.25

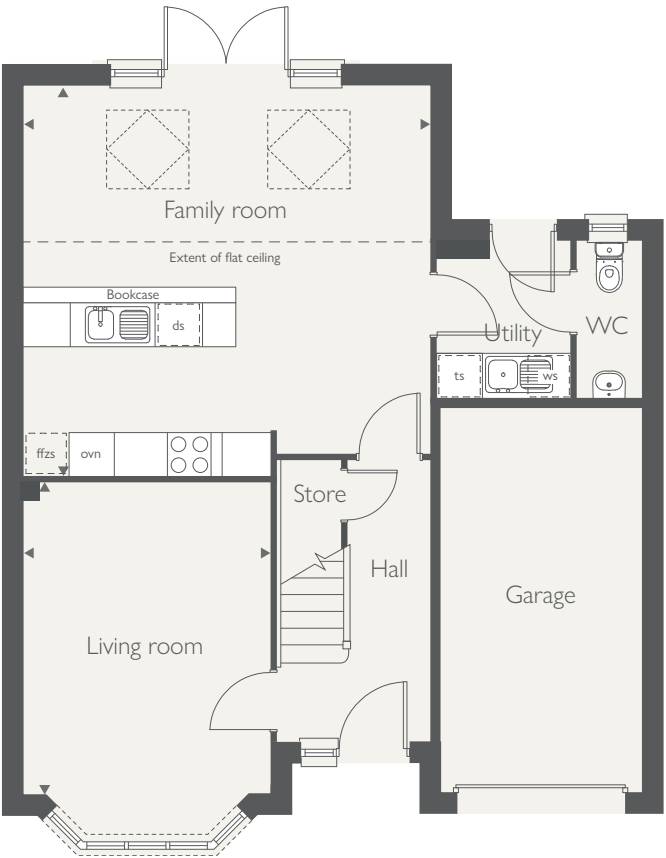


COUNTRYSIDE
Homes

FIRST FLOOR



GROUND FLOOR





- Convenient downstairs store room and WC
- Stylish open-plan kitchen and dining/family room with beautiful bay window
- Impressive skylight windows and French doors leading to rear garden
- Spacious separate living room
- Master bedroom with en-suite
- Three further well-proportioned bedrooms
- Single garage
- Modern family bathroom with bath and separate shower

countrysidehomes.com

THE BAYBRIDGE

4 bedroom home



COUNTRYSIDE
Homes

THE BAYBRIDGE

4 bedroom home



GROUND FLOOR

| | metres | feet/inches |
|-----------------|-------------|---------------|
| Kitchen | 3.16 x 3.80 | 10'4" x 12'5" |
| Dining / family | 3.16 x 4.26 | 10'4" x 14' |
| Sitting room | 3.43 x 4.04 | 11'3" x 13'3" |

FIRST FLOOR

| | | |
|-----------|-------------|---------------|
| Bedroom 1 | 3.22 x 3.18 | 10'6" x 10'4" |
| Bedroom 2 | 3.41 x 2.97 | 11'2" x 9'7" |
| Bedroom 3 | 2.82 x 3.16 | 9'3" x 10'4" |
| Bedroom 4 | 2.82 x 2.99 | 9'3" x 9'8" |

| | | | |
|------|-----------------------|-----|--------------------|
| ovn | oven | tds | tumble dryer space |
| h | hob | c/c | cylinder cupboard |
| ds | dishwasher space | ◀ ▶ | measuring points |
| ws | washing machine space | ⬡ | skylight windows |
| ffzr | fridge freezer | ■ | SVP |

The Baybridge

The floorplan has been produced for illustrative purposes only. Room sizes shown are between arrow points as indicated on plan. The dimensions have tolerances of + or -50mm and should not be used other than for general guidance. If specific dimensions are required, enquiries should be made to the sales consultant. The floor plans shown are not to scale. Measurements are based on the original drawings. Slight variations may occur during construction.

The illustrations shown are computer generated impressions of how the property may look and are indicative only. External details or finishes may vary on individual plots and homes may be built in either detached or attached styles depending on the development layout. Exact specifications, window styles and whether a property is left or right-handed may differ from plot to plot. Please speak to our sales consultant for specific plot details.

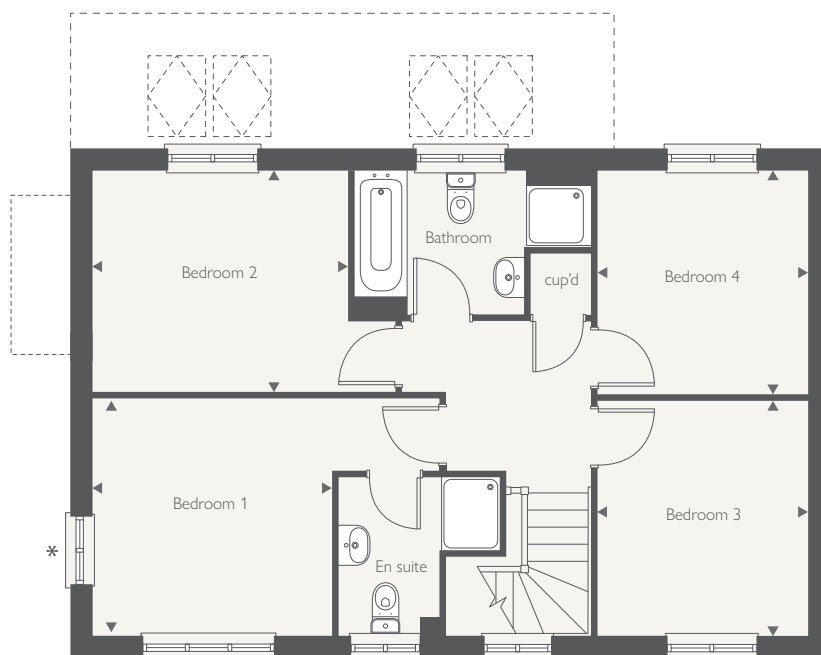
Produced by Milk.

DS11572 / 01.25

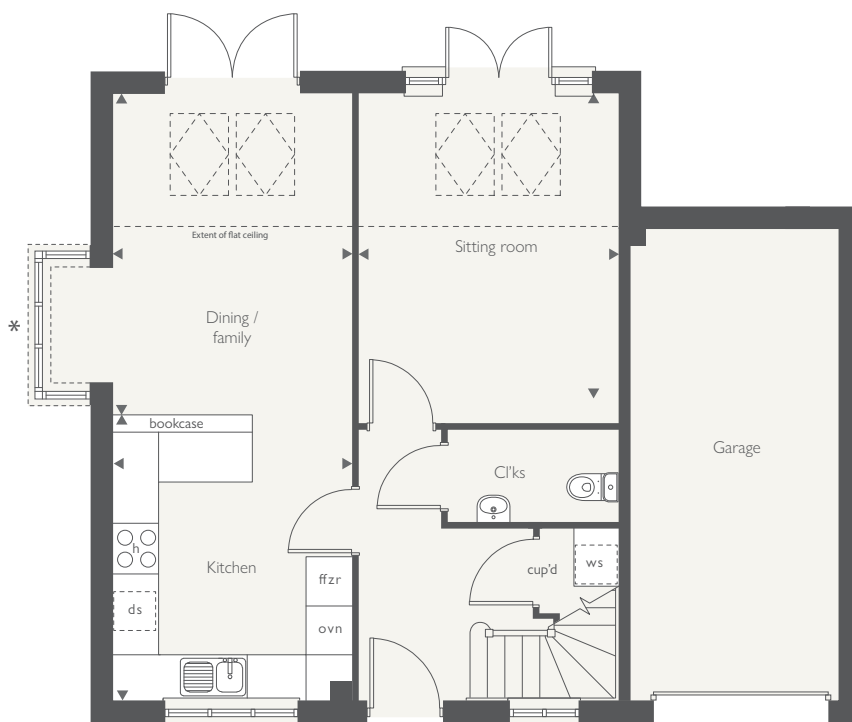


COUNTRYSIDE
Homes

FIRST FLOOR



GROUND FLOOR





- Convenient downstairs store room and WC
- Stylish open-plan kitchen and dining/family room with beautiful bay window
- Impressive skylight windows and French doors leading to rear garden
- Spacious separate living room
- Master bedroom with en-suite
- Three further well-proportioned bedrooms
- Single garage
- Modern family bathroom with bath and separate shower

countrysidehomes.com

THE ELFORD

4 bedroom home



COUNTRYSIDE
Homes

THE ELFORD

4 bedroom home



GROUND FLOOR

| | metres | feet/inches |
|-----------------|-------------|----------------|
| Kitchen | 3.36 x 4.61 | 11'2" x 15'12" |
| Dining / family | 3.36 x 4.03 | 11'2" x 13'2" |
| Living room | 3.17 x 3.93 | 10'4" x 12'9" |

FIRST FLOOR

| | | |
|-----------|-------------|---------------|
| Bedroom 1 | 3.23 x 3.19 | 10'6" x 10'5" |
| Bedroom 2 | 3.42 x 2.97 | 11'2" x 9'7" |
| Bedroom 3 | 2.83 x 3.16 | 9'3" x 10'4" |
| Bedroom 4 | 2.83 x 2.99 | 9'3" x 9'8" |

| | | | |
|------|-----------------------|-----|------------------------|
| ovn | oven | wr | wardrobe (sales extra) |
| h | hob | c/c | cylinder cupboard |
| ds | dishwasher space | ◀ ▶ | measuring points |
| ws | washing machine space | ⬡ | skylight windows |
| ffzs | fridge freezer space | ■ | SVP |
| ts | tumble dryer space | | |

* Future storage provision for hot water cylinder

The Elford

The floorplan has been produced for illustrative purposes only. Room sizes shown are between arrow points as indicated on plan. The dimensions have tolerances of + or -50mm and should not be used other than for general guidance. If specific dimensions are required, enquiries should be made to the sales consultant. The floor plans shown are not to scale. Measurements are based on the original drawings. Slight variations may occur during construction.

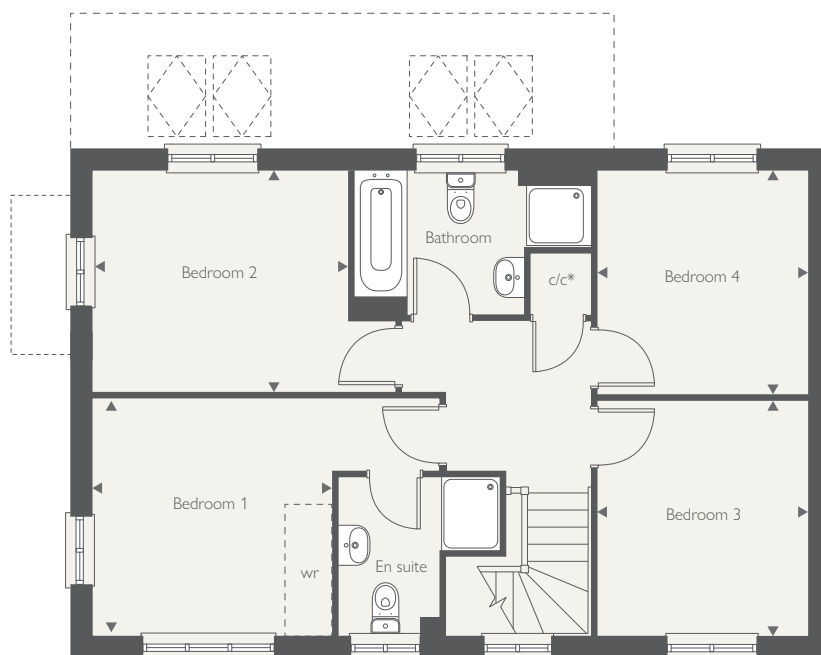
The illustrations shown are computer generated impressions of how the property may look and are indicative only. External details or finishes may vary on individual plots and homes may be built in either detached or attached styles depending on the development layout. Exact specifications, window styles and whether a property is left or right-handed may differ from plot to plot. Please speak to our sales consultant for specific plot details.

DS14512 / 09.25

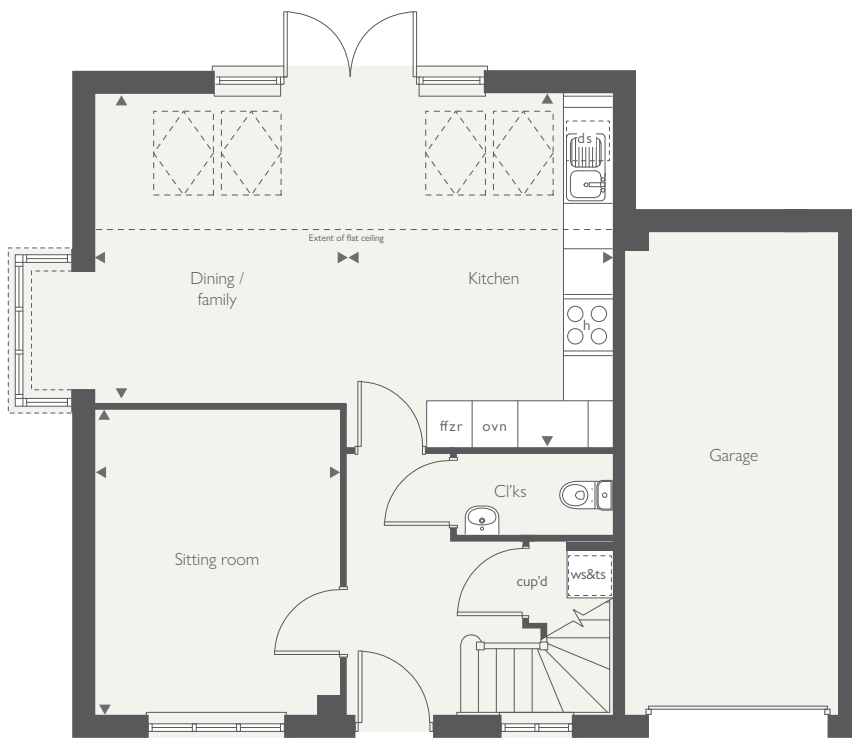


COUNTRYSIDE
Homes

FIRST FLOOR



GROUND FLOOR





- Open-plan kitchen / diner
- Light enhancing Skylight windows & French doors
- Separate utility room
- Bedroom 1 includes an en suite

THE STRATFORD FCT

4 bedroom home



COUNTRYSIDE
Homes

THE STRATFORD FCT

4 bedroom home



| GROUND FLOOR | metres | feet / inches |
|--------------------|-------------|----------------|
| Kitchen | 3.13 x 4.29 | 10'3" x 14'1" |
| Dining/family room | 4.66 x 3.73 | 15'3" x 12'3" |
| Living room | 3.32 x 6.70 | 10'11" x 22'0" |

| FIRST FLOOR | metres | feet / inches |
|-------------|-------------|---------------|
| Bedroom 1 | 3.35 x 3.54 | 11'0" x 11'7" |
| Bedroom 2 | 3.11 x 3.40 | 10'2" x 11'2" |
| Bedroom 3 | 2.64 x 3.23 | 8'8" x 10'7" |
| Bedroom 4 | 2.27 x 3.10 | 7'6" x 10'2" |

The Stratford FTC

This floorplan has been produced for illustrative purposes only. Room sizes shown are between arrow points as indicated on plan. The dimensions have tolerances of + or -50mm and should not be used other than for general guidance. If specific dimensions are required, enquiries should be made to the sales consultant.

| | | | |
|------|-----------------------|-----|-------------------|
| h | hob | c/c | cylinder cupboard |
| ds | dishwasher space | ◀ ▶ | measuring points |
| ws | washing machine space | ⬡ | skylight windows |
| ffzs | fridge freezer space | ■ | SVP |
| ts | tumble dryer space | | |

Please refer to the sales consultant for specific plot details as the illustrations shown are computer generated impressions of how the property may look so are indicative only. External details or finishes may vary on individual plots and homes may be built in either detached or attached styles depending on the development layout. Exact specifications, window styles and whether a property is left or right handed may differ from plot to plot.

The floorplans shown are not to scale. Measurements are based on the original drawings. Slight variations may occur during construction.

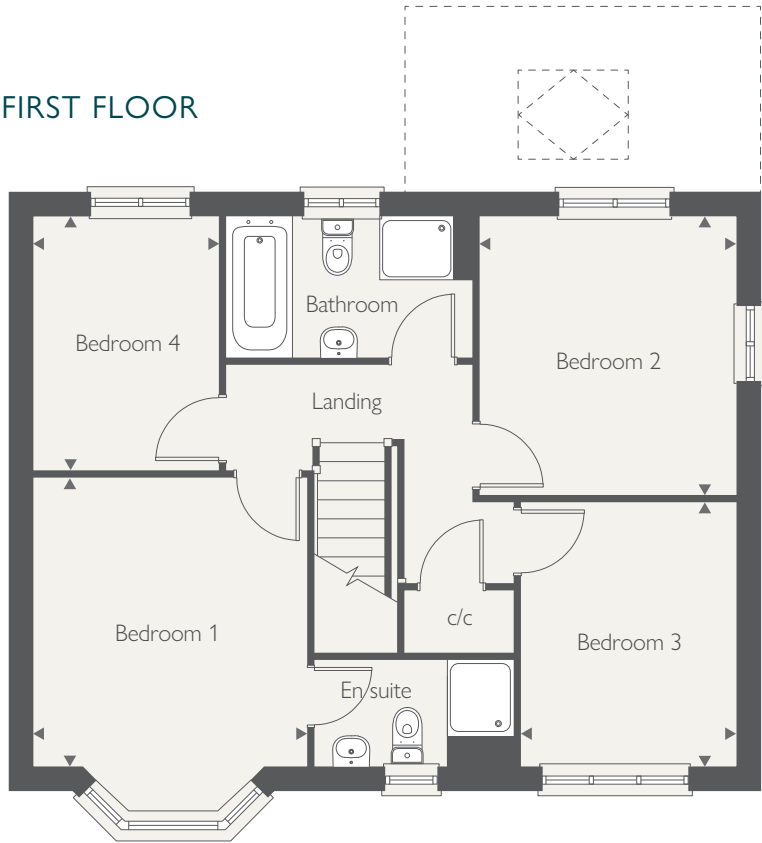
Produced by the Vistry Group Design Studio.

DS14512 / 09.25

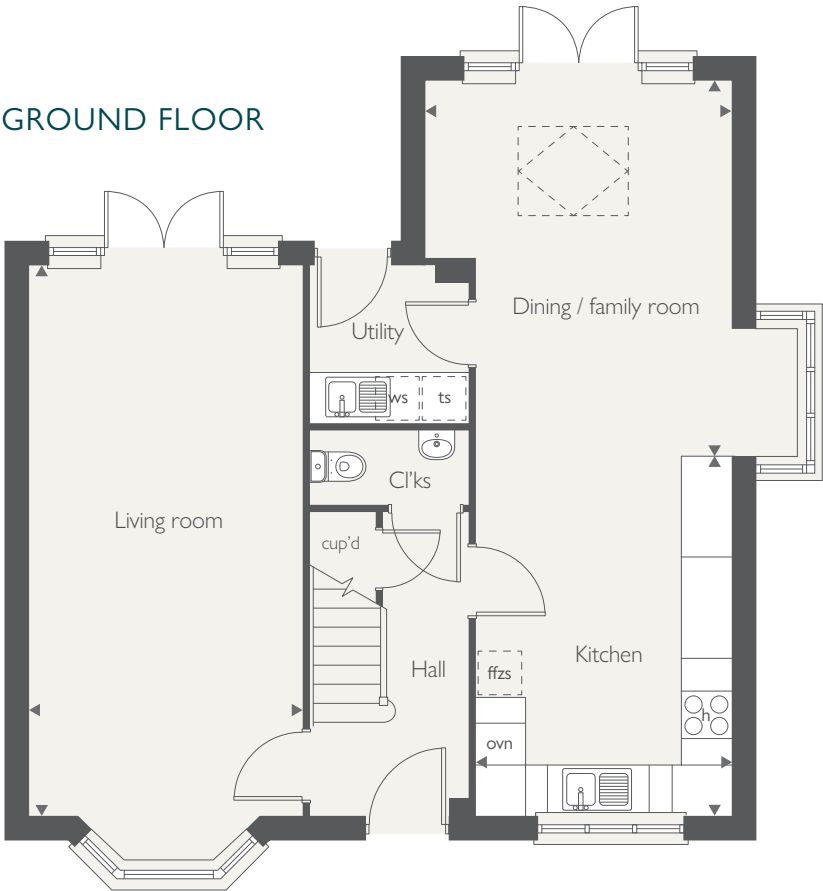


COUNTRYSIDE
Homes

FIRST FLOOR



GROUND FLOOR





EASTBROOK VILLAGE

Maghull



COUNTRYSIDE
Homes

EASTBROOK VILLAGE

Maghull

Use this guide to see what features are included in your new home. Your sales consultant will be happy to discuss the **Personalise** range of extras available.



KITCHEN

| | | 2 bedroom The Esk | 3 bedroom The Longford The New Ashbourne The New Ashbourne FCT The New Stamford The New Walton The Ashop The Ellesmere | 4 bedroom The Lymington The Oakham The Baybridge The Dunham The Stratford FCT |
|--|---|----------------------|---|--|
| Symphony Konzept range kitchen with laminate worktop | ■ | ■ | ■ | ■ |
| Stainless steel sink and drainer (single bowl) with chrome mixer tap | ■ | ■ | ■ | ■ |
| Stainless steel sink and drainer (single bowl) with chrome mixer tap in utility | | | | ■ |
| Indesit hob (60cm) with Indesit built-in single oven, with stainless steel splashback and integrated silver hood | ■ | ■ | ■ | ■ |
| Indesit hob (60 cm) with built-in single oven, with stainless steel splashback and 60cm stainless steel chimney hood | | | | ■ |
| White Pendant light holder | ■ | ■ | ■ | ■ |
| Fridge / freezer space | ■ | ■ | ■ | ■ |
| Space for integrated dishwasher with plumbing and electrics | ■ | ■ | ■ | ■ |
| Space for washing machine with plumbing and electrics in kitchen | ■ | | ■ | ■ |
| Space for washing machine with plumbing and electrics in utility | | ■ | ■ | ■ |

BATHROOMS AND EN SUITE(S)

| | | | | | | |
|---|---|---|---|---|---|---|
| Ideal Standard contemporary white sanitaryware | ■ | ■ | ■ | ■ | ■ | ■ |
| En suite to bedroom 1 | | ■ | ■ | ■ | ■ | |
| Ideal Standard low profile shower tray with glass enclosure in en suite | | ■ | ■ | ■ | ■ | |
| Choice of Standard Porcelanosa wall tiling (splashback, 450mm over bath, and full-height to shower cubicle) | ■ | ■ | ■ | ■ | ■ | ■ |
| White batten light holder | ■ | ■ | ■ | ■ | ■ | ■ |

■ Fitted as standard - included in the property

DOORS AND WINDOWS

| | 2 bedroom The Esk | 3 bedroom The Longford The New Ashbourne The New Ashbourne FCT The New Stamford The New Walton The Ashop The Ellesmere | 4 bedroom The Lymington The Oakham The Baybridge The Dunham The Stratford FCT |
|---|----------------------|---|--|
| Front door with 3-pont multi-point security locking system and security chain | ■ | ■ | ■ |
| PVCu double glazing to windows | ■ | ■ | ■ |
| Double glazed PVCu French doors | ■ | ■ | ■ |
| Internal ladder door style pre-primed doors with brass satin finish handles | ■ | ■ | ■ |
| Paving outside French door and path to garage personnel door (where applicable) | ■ | ■ | ■ |

GENERAL

| | | | | | | |
|--|---|---|---|---|---|---|
| White painted walls and smooth white ceilings | ■ | ■ | ■ | ■ | ■ | ■ |
| TV point to living room and family room (where applicable) | ■ | ■ | ■ | ■ | ■ | ■ |
| Master telephone socket (plus to study where shown) | ■ | ■ | ■ | ■ | ■ | ■ |
| Gas central heating with wall mounted combi-boiler,programme selector and room thermostat(s) | ■ | ■ | ■ | ■ | ■ | ■ |
| Contemporaty lantern to front door and wiring only to the rear door | ■ | ■ | ■ | ■ | ■ | ■ |
| Mains wired smoke detectors with battery back-up | ■ | ■ | ■ | ■ | ■ | ■ |
| Battery powered Carbon Monoxide detector (wall mounted) to be provided for each floor | ■ | ■ | ■ | ■ | ■ | ■ |
| Enclosed fenced rear garden, and garden gate (where applicable) | ■ | ■ | ■ | ■ | ■ | ■ |
| Electric vehicle (EV) charging points | ■ | ■ | ■ | ■ | ■ | ■ |
| NHBC Buildmark cover | ■ | ■ | ■ | ■ | ■ | ■ |
| First two years' customer service support from Countryside Homes | ■ | ■ | ■ | ■ | ■ | ■ |

SO MUCH CHOICE...

Part of the excitement of buying a new home is the thrill of being the first person to live in the property and having a brand new contemporary kitchen and modern bathroom. Our premium brand partners ensure that all of our fixtures and fittings comply with the latest Government building regulations and only branded appliances are installed in your new home.

Once you know what specification comes included, you'll have a choice from our specially selected tiles for your kitchen and bathrooms, as well as kitchen worktops and cupboard doors. You can then use the Countryside Homes Personalise brochure to add the finishing touches to your home to make it extra special for you!

From personalising your bathrooms with stunning ceramics, or adding smooth sliding wardrobes to your main bedroom, there are a wide range of additional options and upgrades available.

The availability of items is subject to the stage of build, and can vary by development and house type. Our sales consultants will be happy to provide guidance.



The specification shown is correct at the time of production. Countryside Homes is continually reviewing and updating the specification on all house / apartment types and therefore reserves the right to change specification details. Photographs depict typical Countryside Homes interiors and may include optional upgrades. For full details regarding the current specification and finishes, please speak to our sales consultant

Produced by the Vistry Group Design Studio.

DS11572 / 12.24



COUNTRYSIDE
Homes